

Emergence of coral rubble islet near Manoli Island, Gulf of Mannar, India

C H Ramesh^{*,a,b,c}, T Shunmugaraj^b, R Mani Murali^d, S Koushik^b & M V R Murthy^c

^aBiological Oceanography Division (BOD), National Institute of Oceanography (CSIR-NIO), Dona Paula, Panaji, Goa – 403 004, India

^bNational Centre for Coastal Research (NCCR), NCCR Field Office, Ministry of Earth Sciences (MoES), Mandapam, Tamil Nadu – 623 519, India

^cAcademy of Scientific and Innovative Research (AcSIR), Ghaziabad, Uttar Pradesh – 201 002, India

^dPhysical Oceanography Division (POD), National Institute of Oceanography (CSIR-NIO), Dona Paula, Panaji, Goa – 403 004, India

^eNational Centre for Coastal Research (NCCR), Ministry of Earth Sciences (MoES), Pallikaranai, Chennai, Tamil Nadu – 600 100, India

*[E-mail: chramesh.nio@csir.res.in]

Sr. No	Contents	Page No.
1	Fig. S1 — (a) Sand bar exposure during low tide, and (b) Submerged condition during high tide; (c) Wave pattern on the western side, and (d) Wave pattern on the northern side of the coral mound	ii
2	Fig. S2 — (a) The NHO Chart 2005 showing a bathymetric representation of the island's surroundings, offering a general overview of the depth profile of the study area. No coral rubble islet formation was observed in 2005, and therefore, it is not depicted on this chart. However, the new islet indicated by NHO in this figure appears to be one of the land masses located adjacent to Manoli Island; and (b & c) Unidentified terrestrial plant species growing in the middle of the coral mound	iii
3	Fig S3 — Schematic diagram of the coral mound showing the distribution of branching and massive corals	iv
4	Fig. S4 — Elevated temperatures recorded from the Mandapam region (Data retrieved from GHRST)	iv
5	Fig. S5 — Current velocity profile around the study location over a decade, indicating downward flow of currents towards the southern side of the GoM (Data from OGCM). Black dot represents the study site	v
6	Fig. S6 — A decade wind pattern data across the study location showing slightly perpendicular movement towards the northern side of the GoM (Data from OGCM). Black dot represents the study site	vi

Supplementary Figures

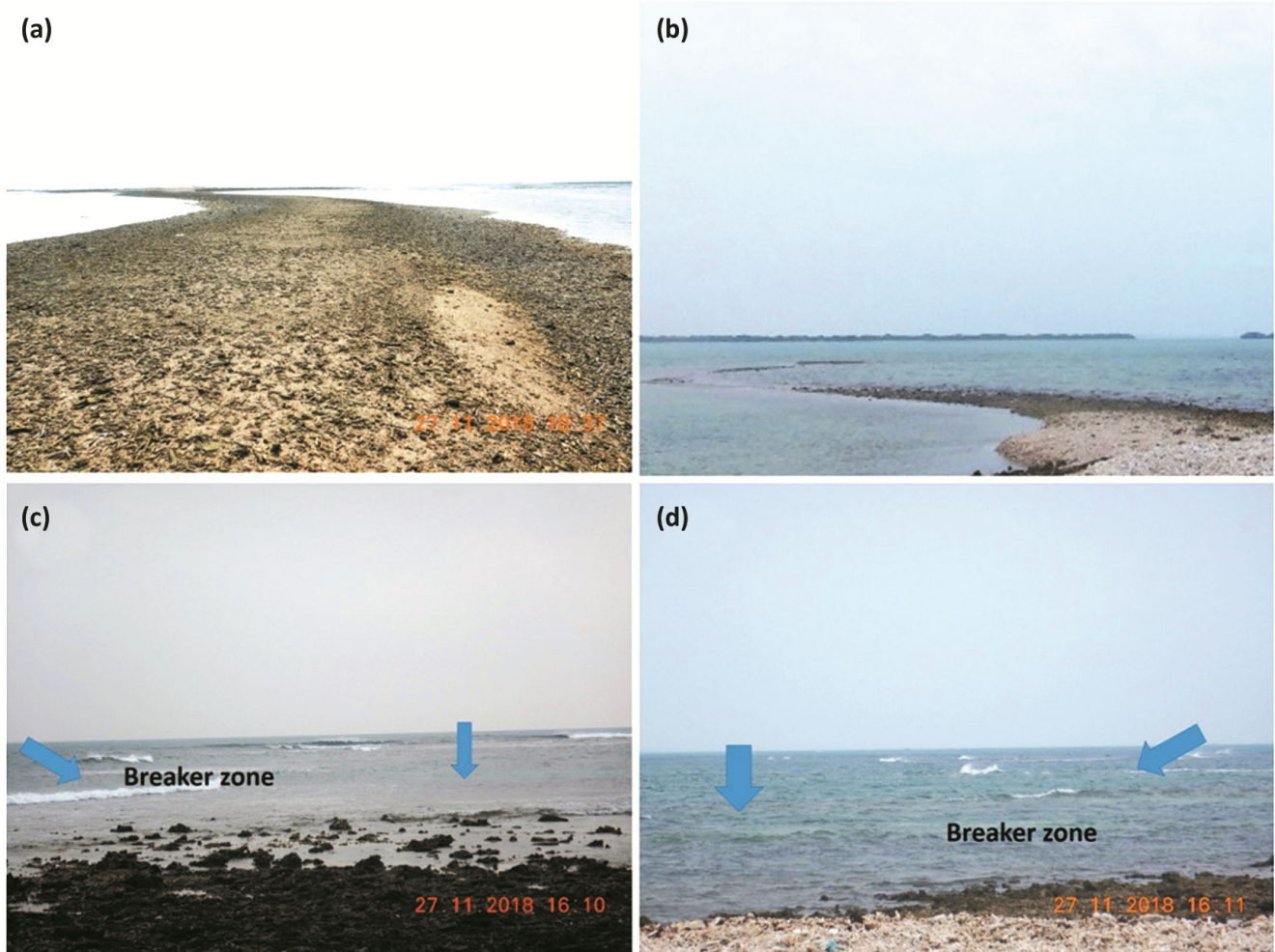


Fig. S1 — (a) Sand bar exposure during low tide, and (b) Submerged condition during high tide; (c) Wave pattern on the western side, and (d) Wave pattern on the northern side of the coral mound

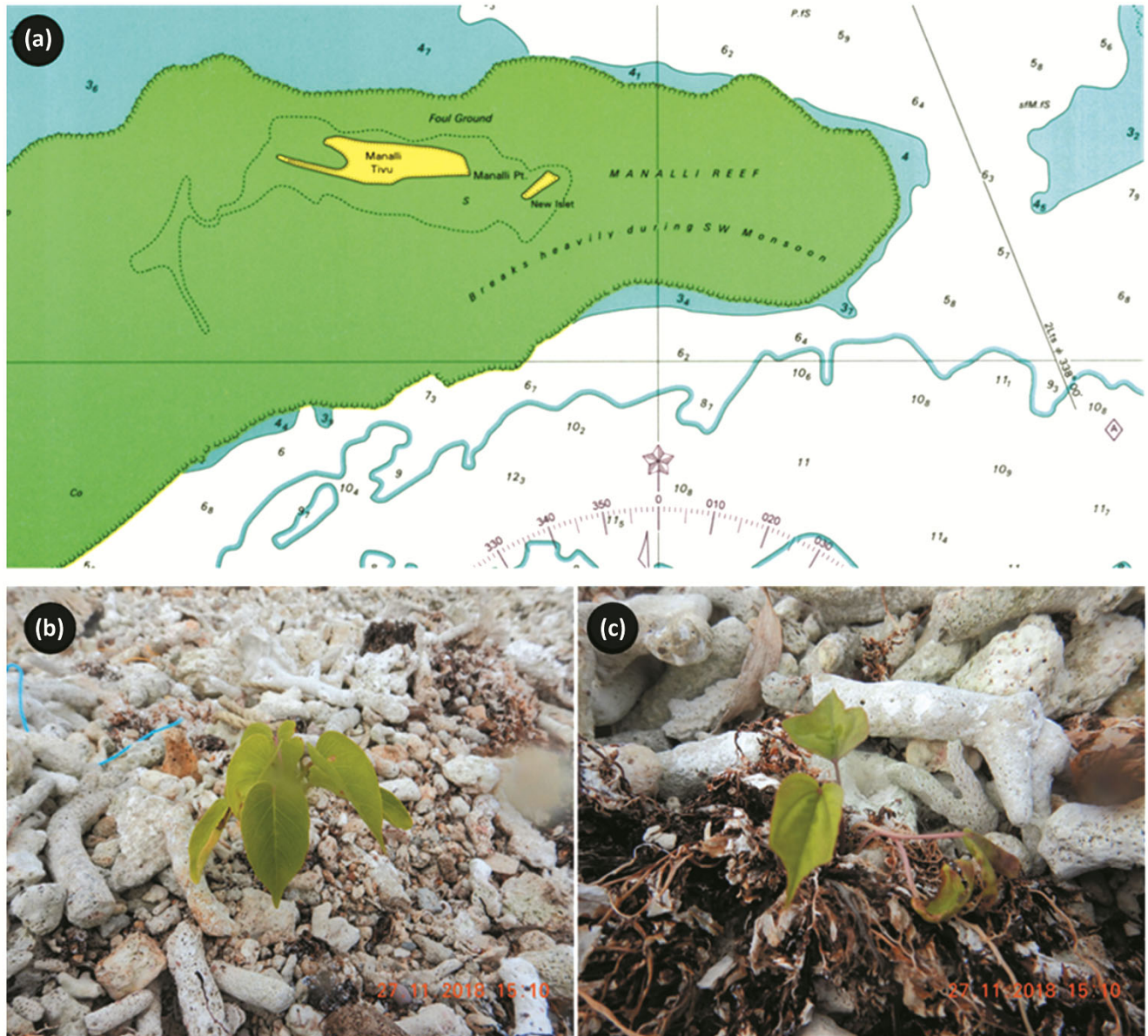


Fig. S2 — (a) The NHO Chart 2005 showing a bathymetric representation of the island's surroundings, offering a general overview of the depth profile of the study area. No coral rubble islet formation was observed in 2005, and therefore, it is not depicted on this chart. However, the new islet indicated by NHO in this figure appears to be one of the land masses located adjacent to Manoli Island; and (b & c) Unidentified terrestrial plant species growing in the middle of the coral mound

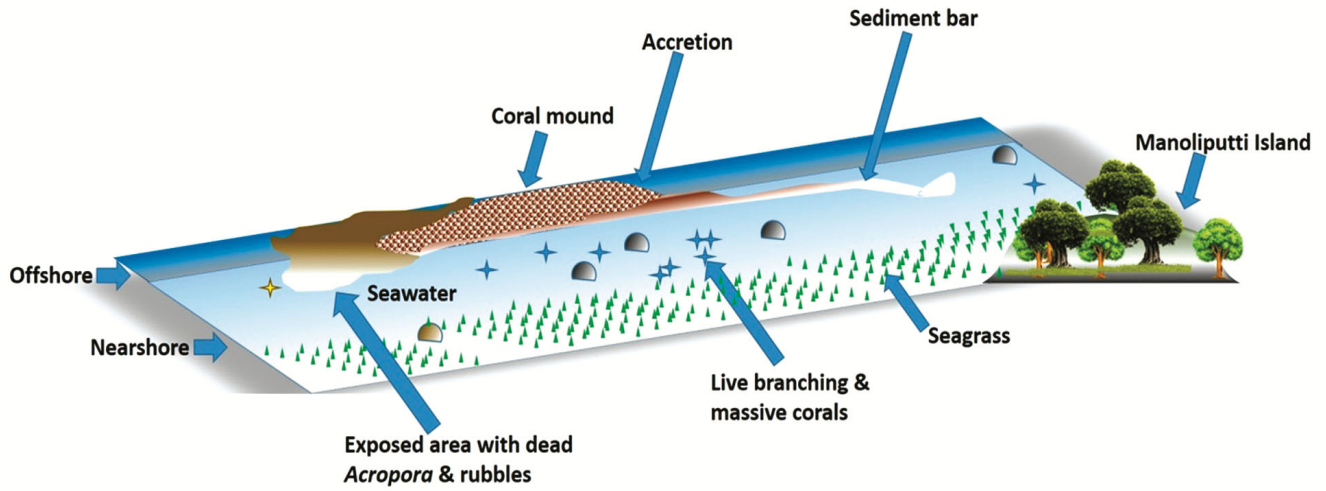


Fig S3 — Schematic diagram of the coral mound showing the distribution of branching and massive corals

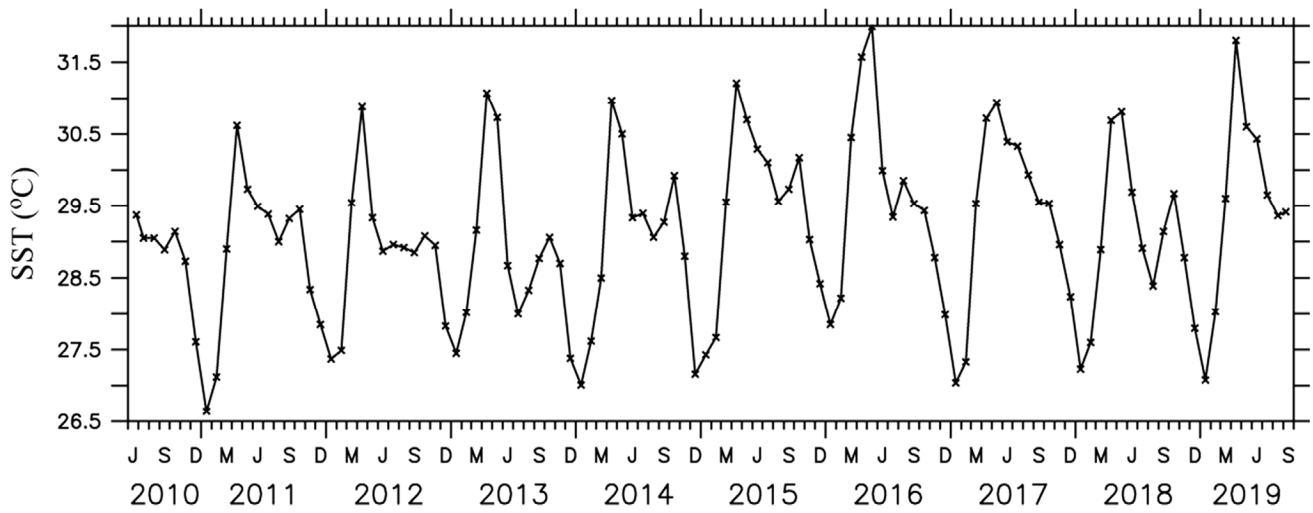


Fig. S4 — Elevated temperatures recorded from the Mandapam region (Data retrieved from GHRSSST)

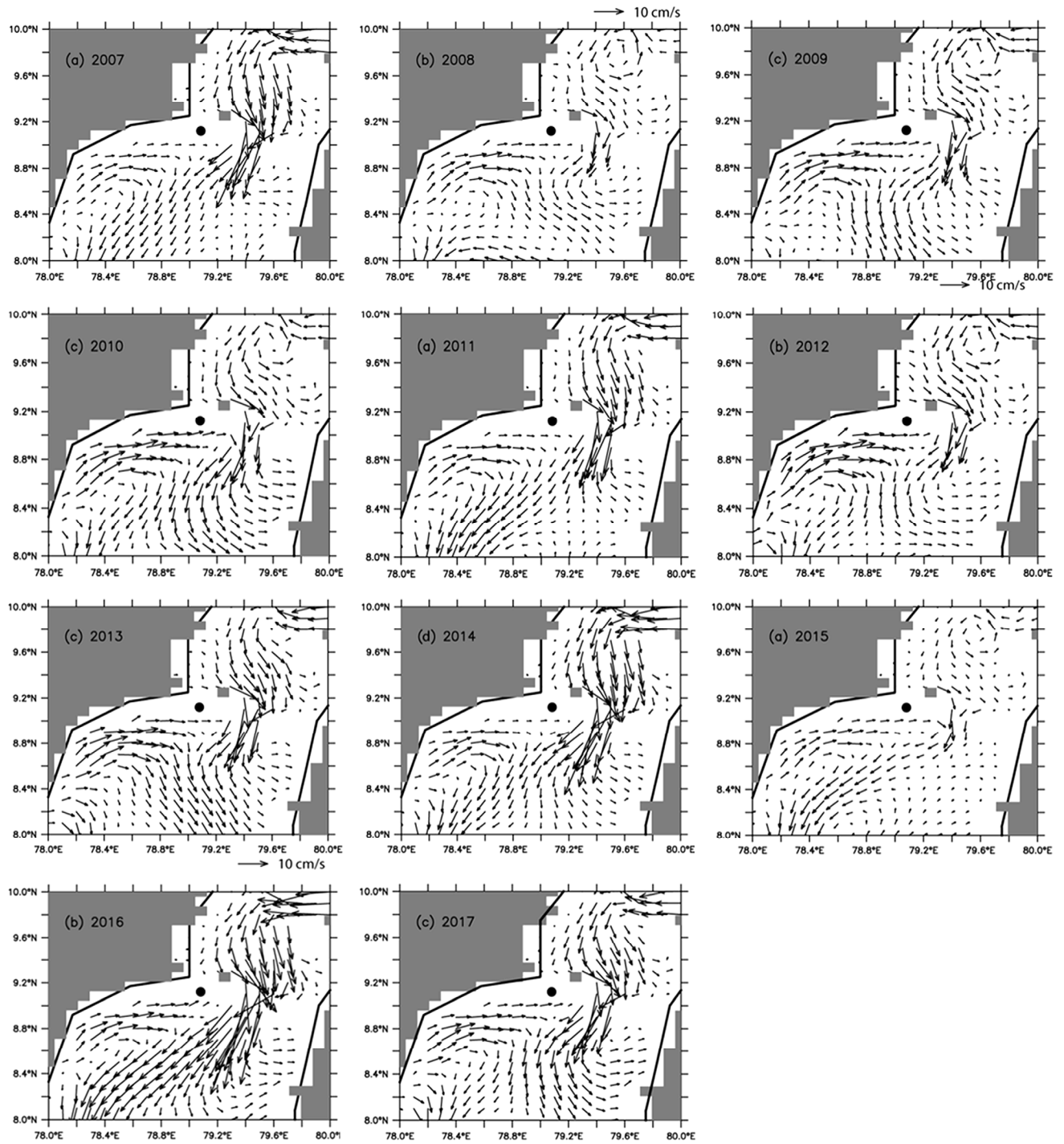


Fig. S5 — Current velocity profile around the study location over a decade, indicating downward flow of currents towards the southern side of the GoM (Data from OGCM). Black dot represents the study site

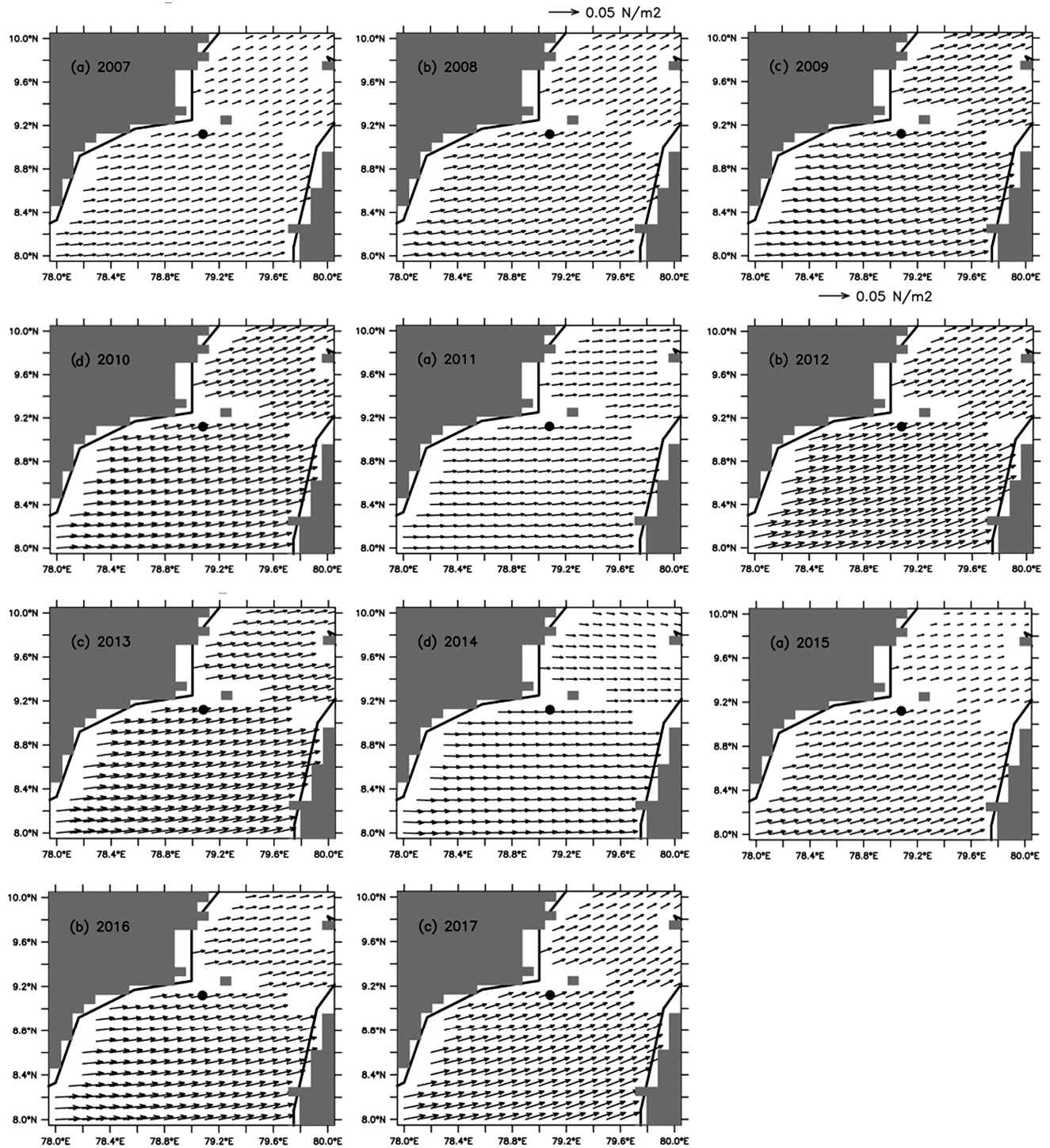


Fig. S6 — A decade wind pattern data across the study location showing slightly perpendicular movement towards the northern side of the GoM (Data from OGCM). Black dot represents the study site