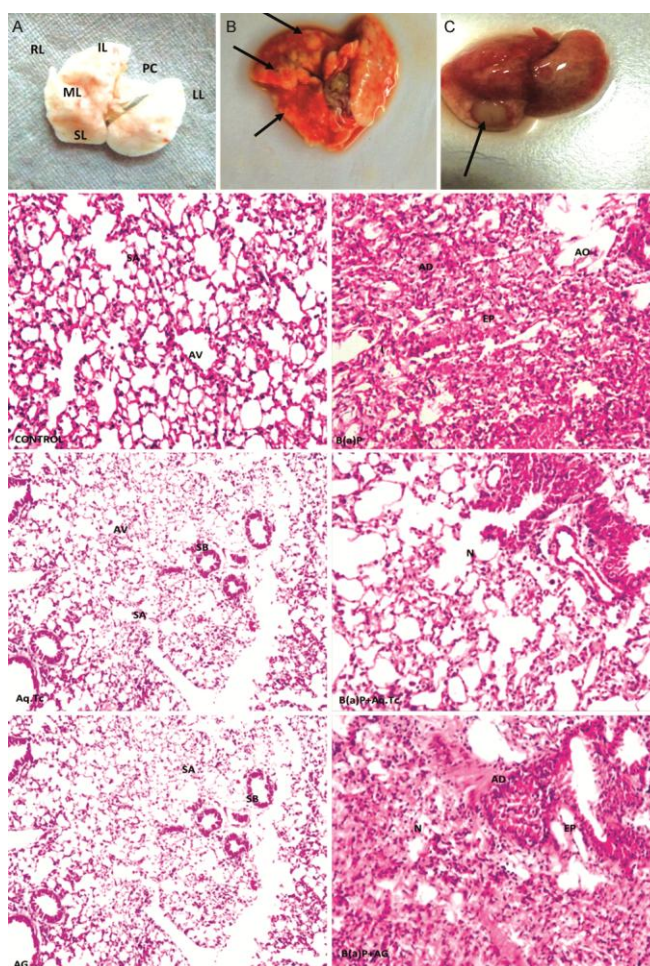


Tinospora cordifolia (Willd.) Hook. f. and Thoms. and Arabinogalactan exert chemopreventive action during B(a)P induced pulmonary carcinogenesis: Studies on ultrastructural, molecular and biochemical alterations

Vandana Mohan & Ashwani Koul*

Supplementary Data



Suppl. Fig. S1 — Gross morphological and histopathological assessment of pulmonary tissue at 22nd week of the treatment. (A) Control; and (B & C) B(a)P group;. [RL: Right lung; LL: Left lung; PC: Post caval lobe; IL: Inferior lobe; ML: Middle lobe; SP: Superior lobe. Arrow indicates the presence of tumors. sa: single squamous epithelium av: alveolar sacs sb: small bronchiole ad: alveolar destruction, ep: extensive proliferation of alveolar epithelium and presence of hyperchromatic nuclei in the alveolar wall; i: Inflammatory cellular infiltrations N; thinning of alveolar walls]