



Impact of mannitol and poly ethylene glycol 6000 induced water deficit on plant biomass and major secondary metabolites in *Centella asiatica* (L.) Urb. *in vitro*

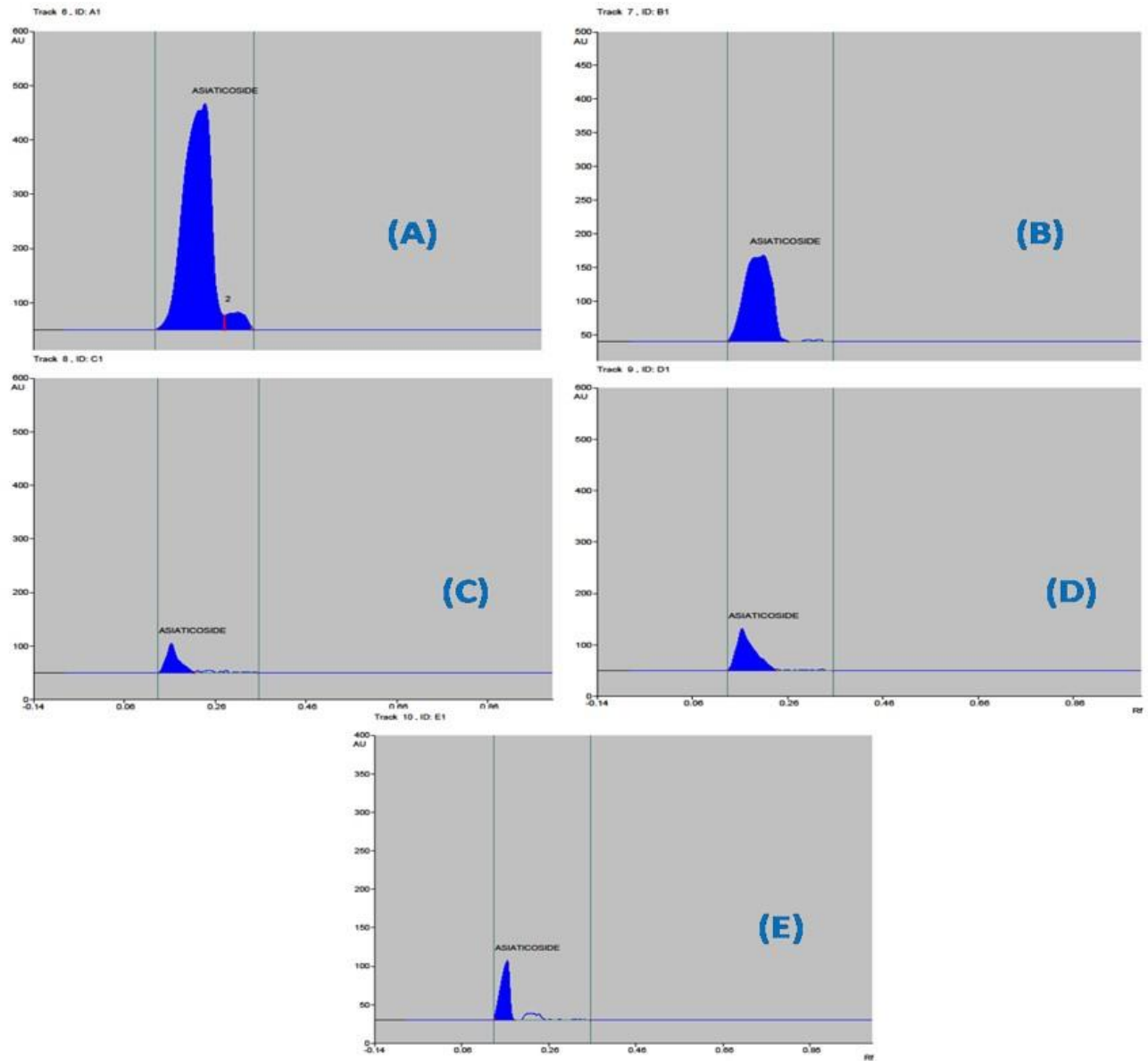
Jisha S, Aiswarya S, Gouri PR, Manikantan K & Sabu KK*

Biotechnology and Bioinformatics Division, Jawaharlal Nehru Tropical Botanic Garden and Research Institute, Palode,
Thiruvananthapuram, Kerala, India

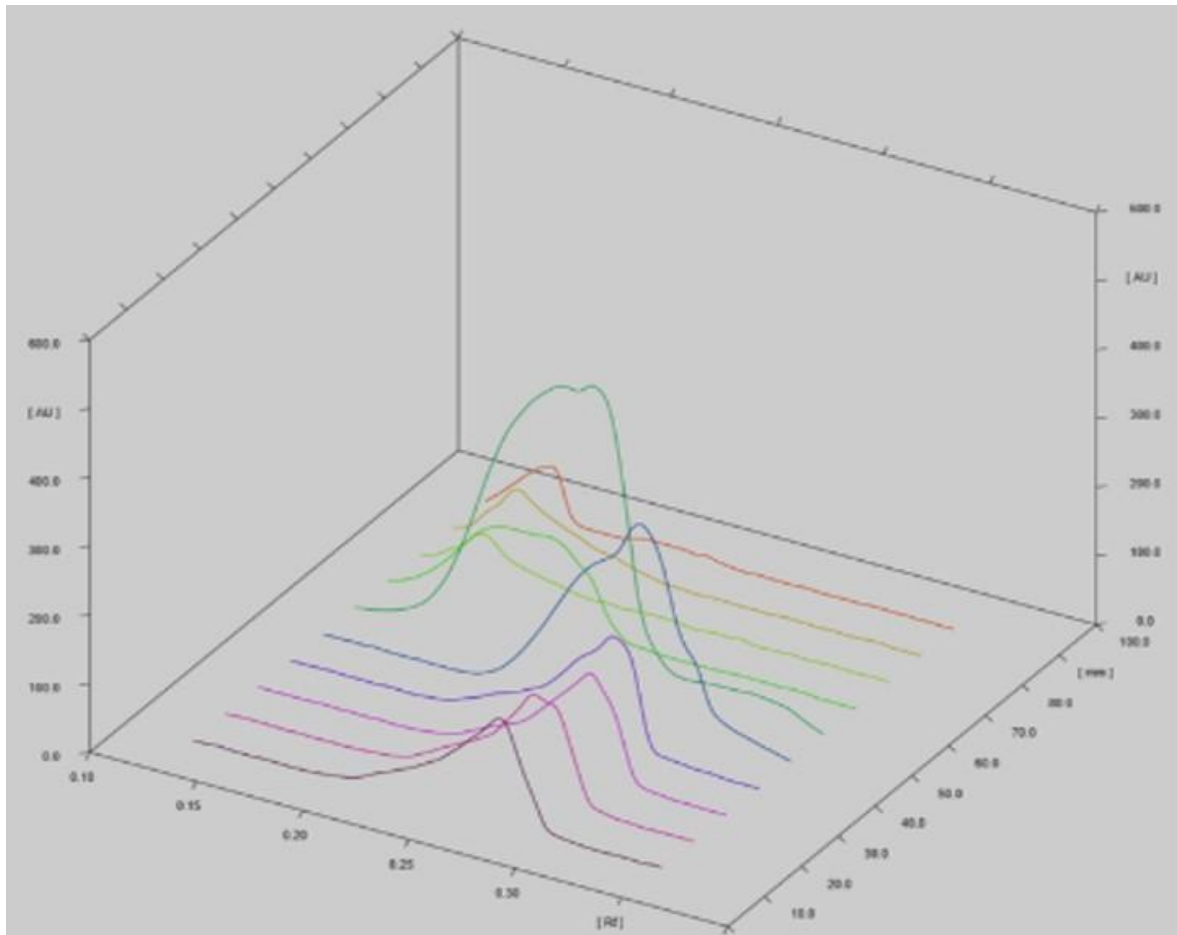
Supplementary Data

Number of leaves		Number of roots		Petiole thickness	
Comparison	P value	Comparison	P value	Comparison	P value
C vs 3P	*** P<0.001	C vs 3P	*** P<0.001	C vs 3P	*** P<0.001
C vs 6P	*** P<0.001	C vs 6P	*** P<0.001	C vs 6P	*** P<0.001
C vs 6M	*** P<0.001	C vs 6M	*** P<0.001	C vs 6M	*** P<0.001
C vs 12M	*** P<0.001	C vs 12M	*** P<0.001	C vs 12M	*** P<0.001
3P vs 6P	*** P<0.001	3P vs 6P	*** P<0.001	3P vs 6P	*** P<0.001
3P vs 6M	*** P<0.001	3P vs 6M	*** P<0.001	3P vs 6M	*** P<0.001
3P vs 12M	*** P<0.001	3P vs 12M	*** P<0.001	3P vs 12M	ns P>0.05
6P vs 6M	*** P<0.001	6P vs 6M	*** P<0.001	6P vs 6M	* P<0.05
6P vs 12M	*** P<0.001	6P vs 12M	*** P<0.001	6P vs 12M	*** P<0.001
6M vs 12M	*** P<0.001	6M vs 12M	*** P<0.001	6M vs 12M	*** P<0.001
Root length		Leaf thickness		Total dry weight	
Comparison	P value	Comparison	P value	Comparison	P value
C vs 3P	*** P<0.001	C vs 3P	*** P<0.001	C vs 3P	*** P<0.001
C vs 6P	*** P<0.001	C vs 6P	*** P<0.001	C vs 6P	*** P<0.001
C vs 6M	*** P<0.001	C vs 6M	*** P<0.001	C vs 6M	*** P<0.001
C vs 12M	*** P<0.001	C vs 12M	*** P<0.001	C vs 12M	*** P<0.001
3P vs 6P	*** P<0.001	3P vs 6P	*** P<0.001	3P vs 6P	*** P<0.001
3P vs 6M	*** P<0.001	3P vs 6M	*** P<0.001	3P vs 6M	*** P<0.001
3P vs 12M	*** P<0.001	3P vs 12M	*** P<0.001	3P vs 12M	*** P<0.001
6P vs 6M	*** P<0.001	6P vs 6M	*** P<0.001	6P vs 6M	ns
6P vs 12M	*** P<0.001	6P vs 12M	*** P<0.001	6P vs 12M	*** P<0.001
6M vs 12M	*** P<0.001	6M vs 12M	** P<0.01	6M vs 12M	** P<0.01

Suppl. Table S1 — Level of significance in each using Graphpad Instat 3



Suppl. Fig. S1 — HPTLC Chromatogram of extracts from (A) control *in vitro* culture; (B) *C. asiatica* with 3% PEG 6000; (C) with 6% PEG 6000; (D) with 6% mannitol; and (E) with 12% mannitol



Suppl. Fig. S2 — 3D densitometric chromatograms obtained from HPTLC analyses from different concentrations of asiaticoside, control *in vitro* culture, *C. asiatica* with 3% PEG 6000, with 6% PEG 6000, with 6% mannitol and with 12% mannitol.