

Isolation and identification of marine diatoms based on frustules morphology using scanning electron microscopy

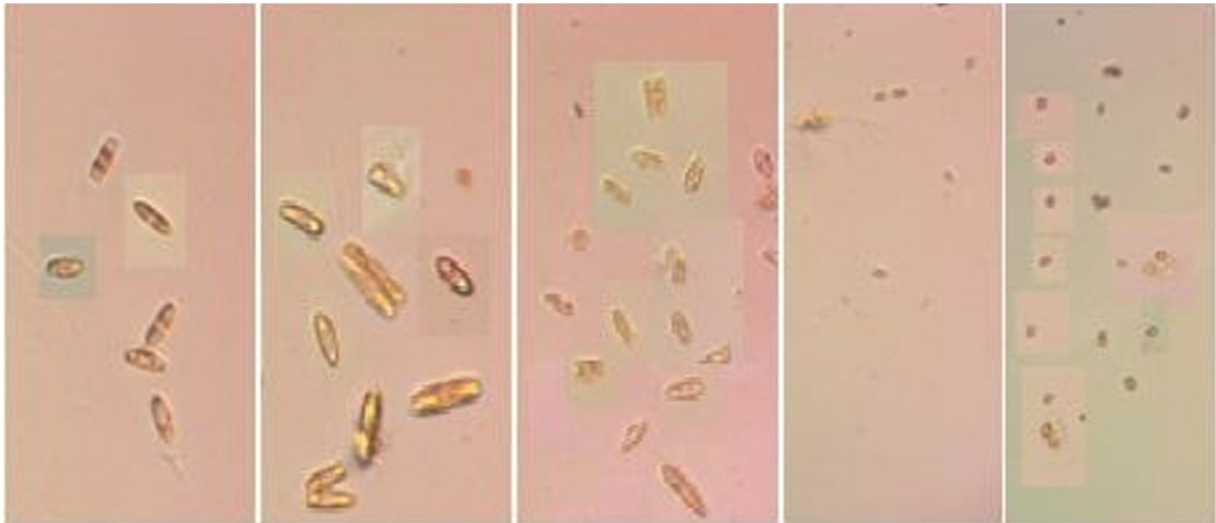
Rinku¹, Abhishek Saxena¹, Pankaj Kumar Singh¹, Kalina Manoylov² & Archana Tiwari^{1*}

¹Diatom Research Laboratory, Amity Institute of Biotechnology, Amity University, NOIDA, Uttar Pradesh-201 313, India

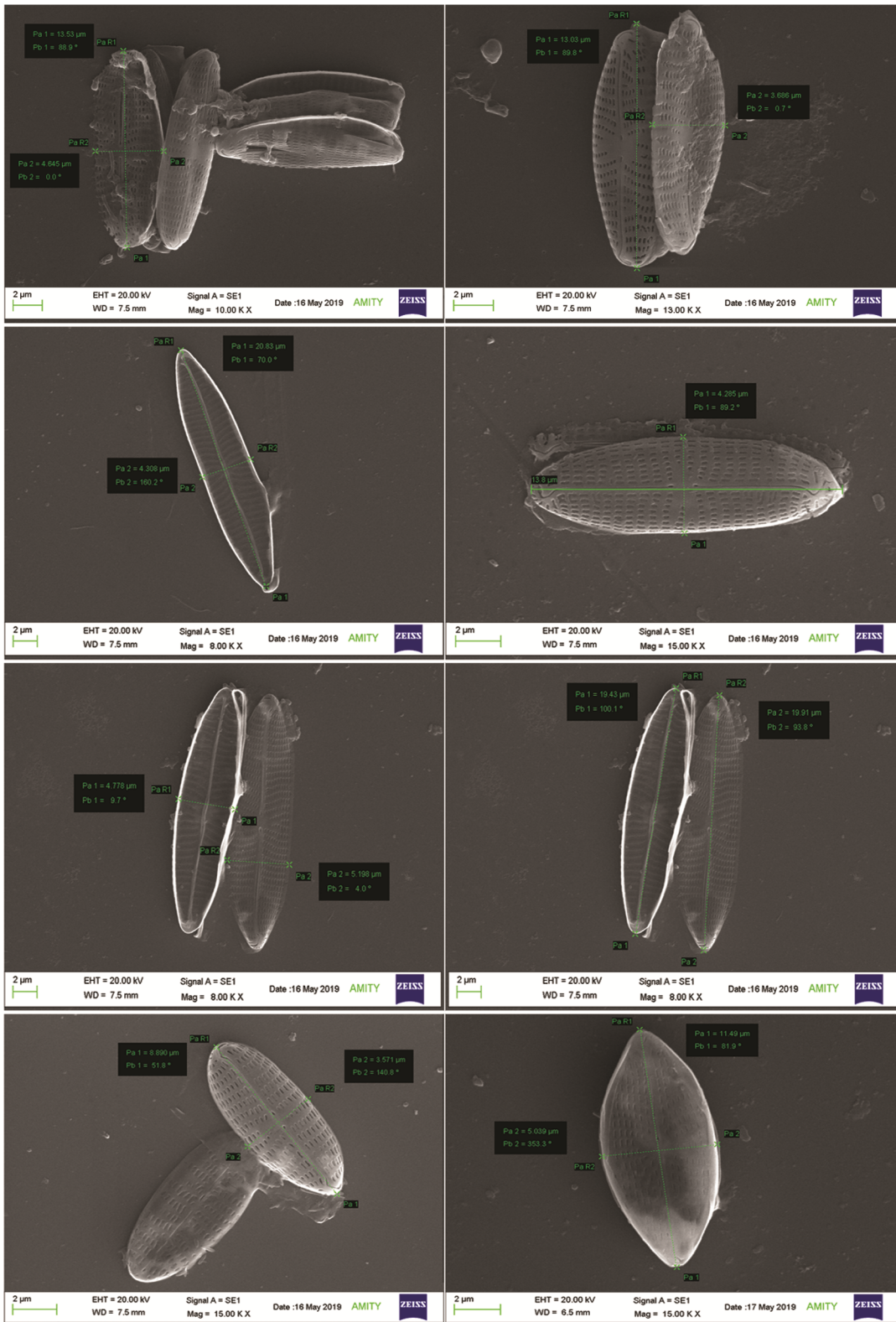
²Georgia College and State University, Milledgeville, Georgia, US 31061

Received 31 January 2024; revised: 20 March 2024

Supplementary data



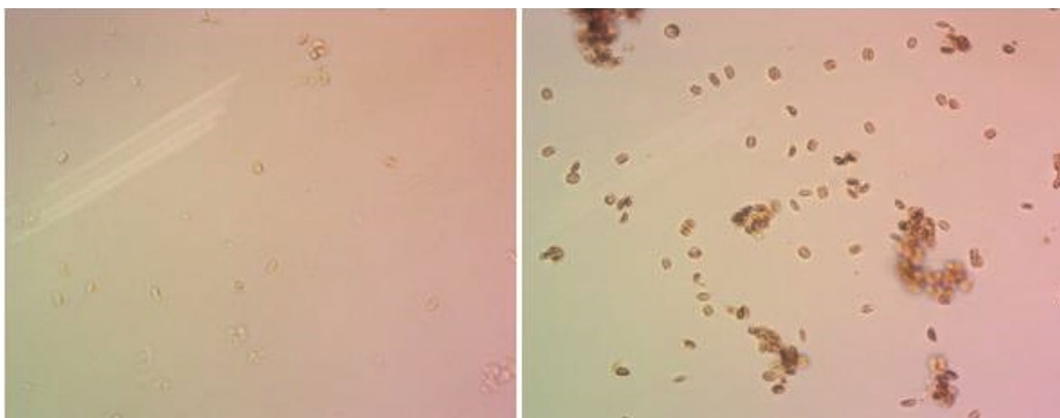
Suppl. Fig. S1 — Light microscopic image of *Navicula* sp. isolated from southern coast of India



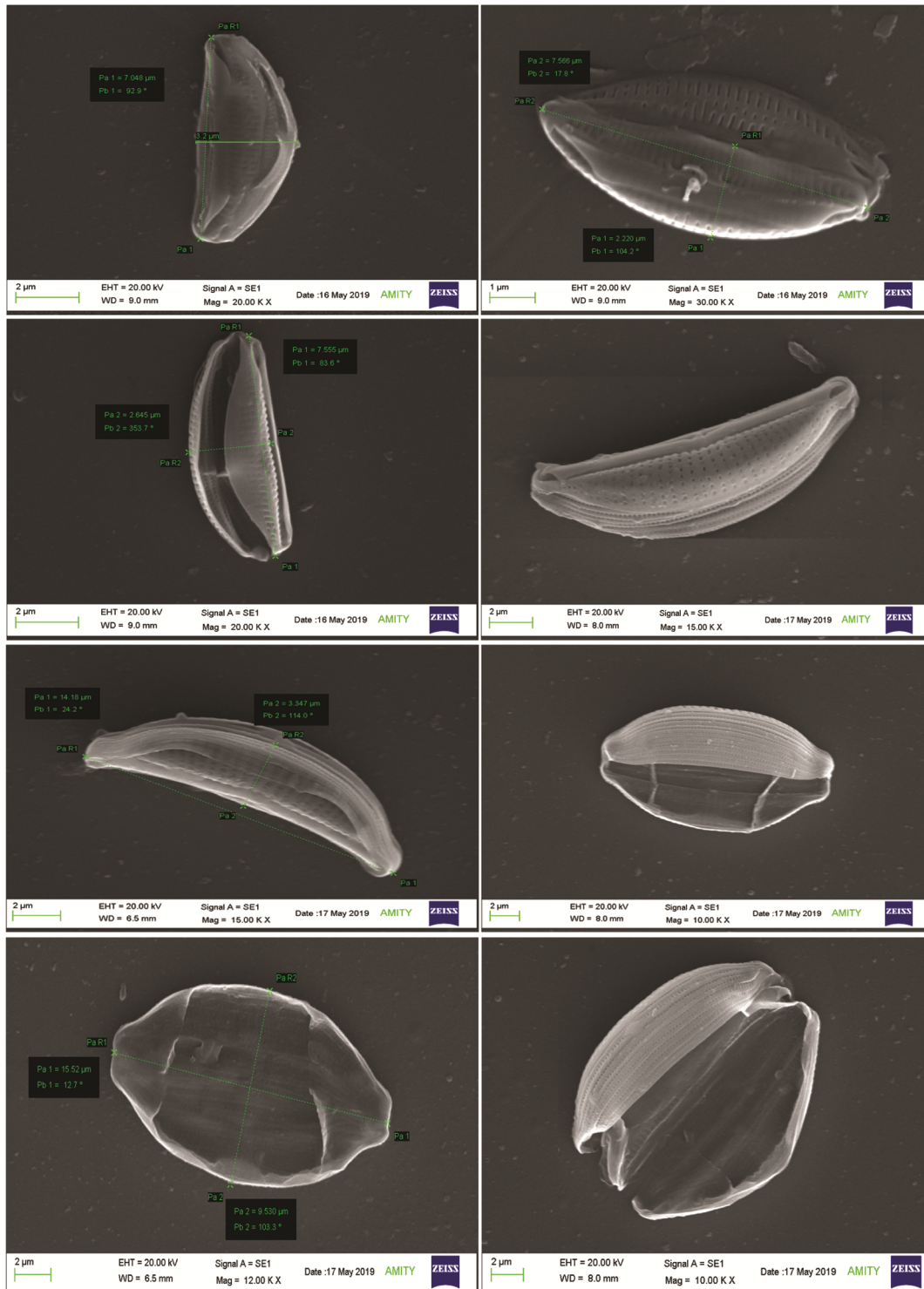
Suppl. Fig. S2 — SEM micrograph of *Navicula* sp. isolated from the Southern coast of India (contd.)

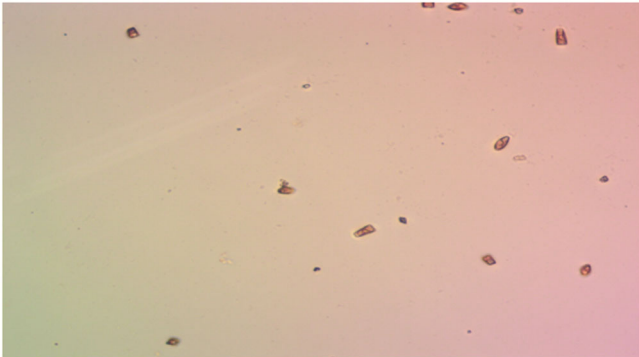


Suppl. Fig. S2 — SEM micrograph of *Navicula* sp. isolated from the Southern coast of India



Suppl. Fig. S3 — Light microscopic image of *Amphora* sp. isolated from southern coast of India

Suppl. Fig. S4 — SEM micrograph of *Amphora* sp. isolated from the Southern coast of India



Suppl. Fig. S5 — Light microscopic image of *Gomphonema* sp. isolated from southern coast of India



Suppl. Fig. S6 — SEM micrograph of *Gomphonema* sp. isolated from the Southern coast of India