

Supplementary Information

Understanding the effect of carbon dots with size variation on collagen

Renuka M^{a,c}, Harini V^a, Surabhya Balasubramanian^{a,c}, Sridevi J^{b,c} & Vaidyanathan V G^{*a,c}

^a Advanced Materials Laboratory, CSIR-Central Leather Research Institute, Adyar, Chennai 600 020, India

^b Center for Analysis, Testing, Evaluation and Reporting Services (CATERS), CSIR-Central Leather Research Institute, Adyar, Chennai 600 020, India

^c Academy of Scientific and Innovative Research (AcSIR), CSIR-HRDC Campus, Postal Staff College Area Sector 19, Kamla Nehru Nagar, Ghaziabad 201 002, Uttar Pradesh, India

E-mail: vaidyanathan@clri.res.in

Received 13 February 2024; accepted (revised) 5 July 2024

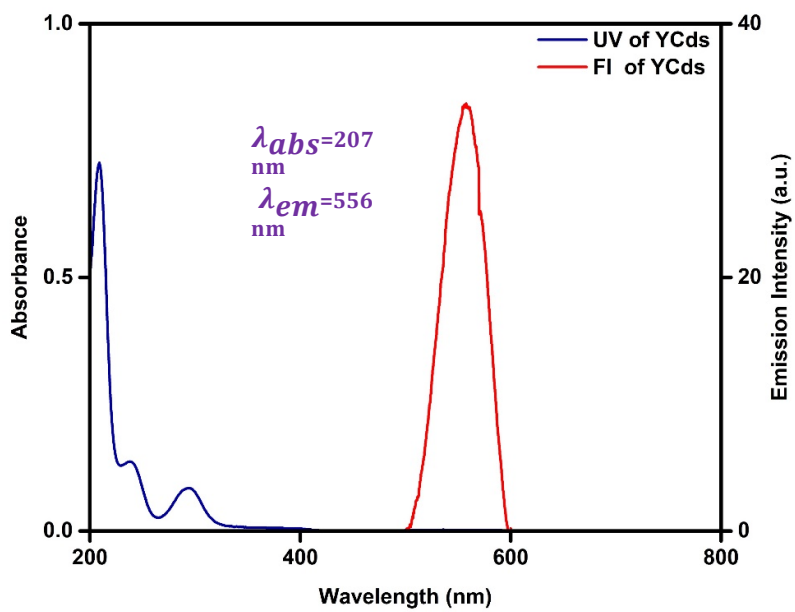
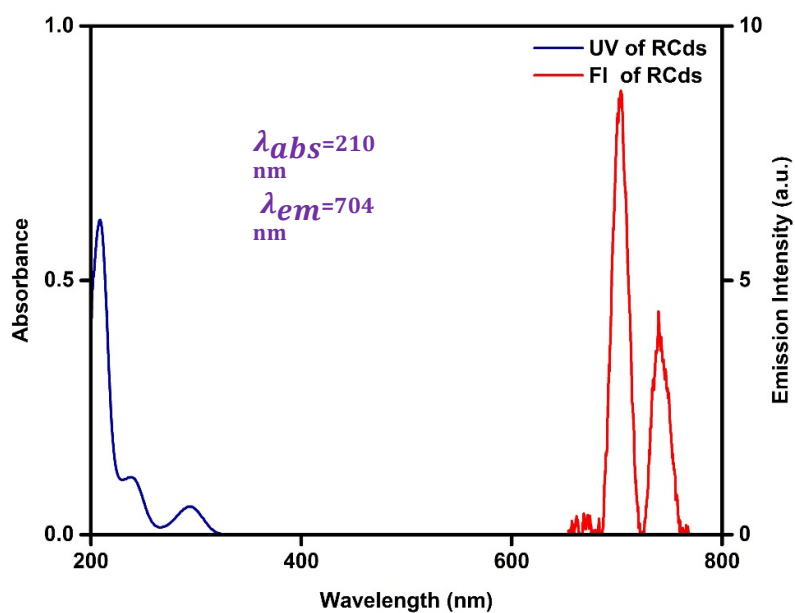


Fig. S1. Electronic and emission spectra of RCD(above) and YCD (below)

(a)



(b)

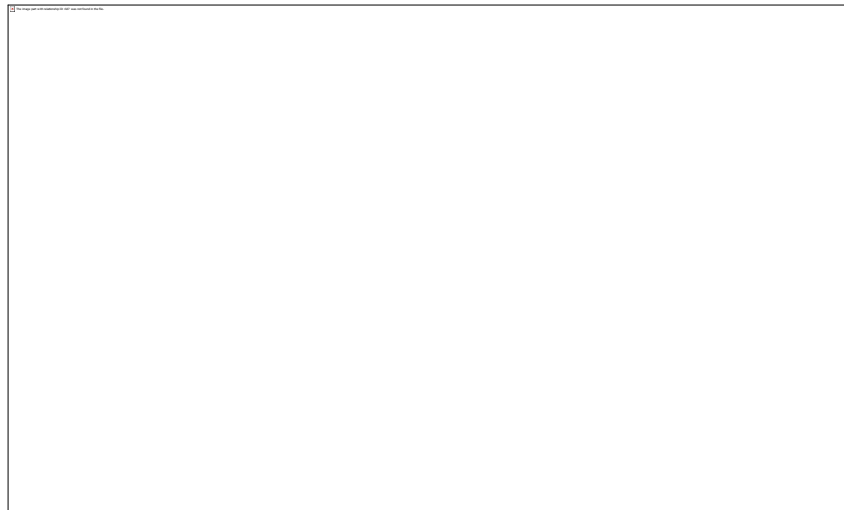


Fig. S2. TEM images of (a) RCD and (b) YCD

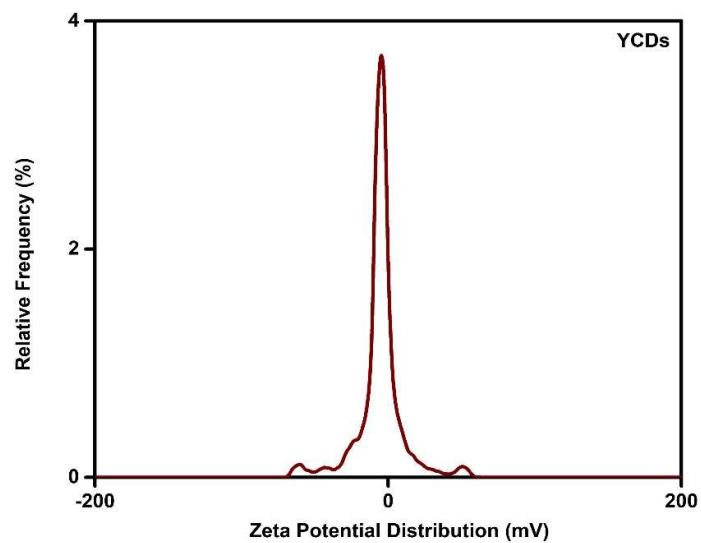
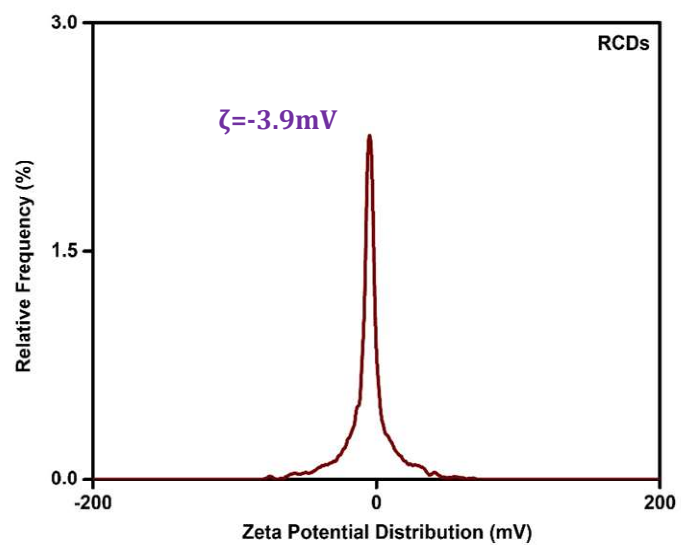


Fig. S3 Zeta potential of RCD (above) and YCD (below)

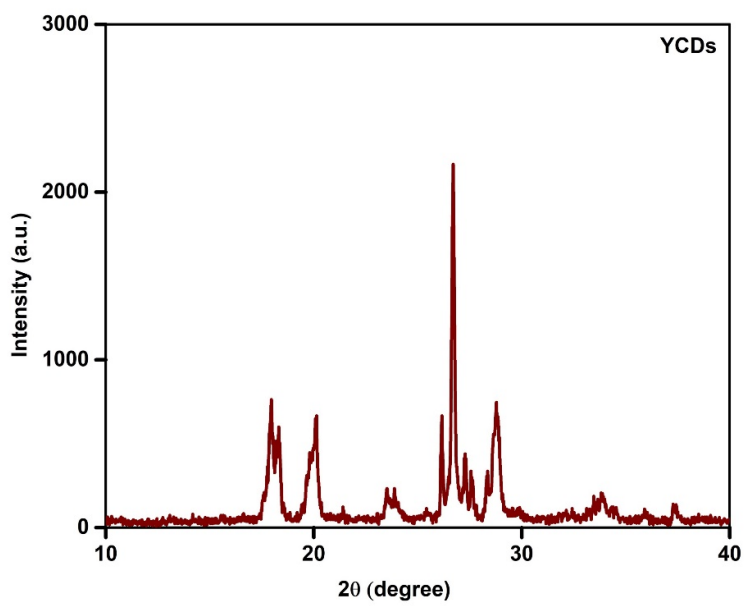
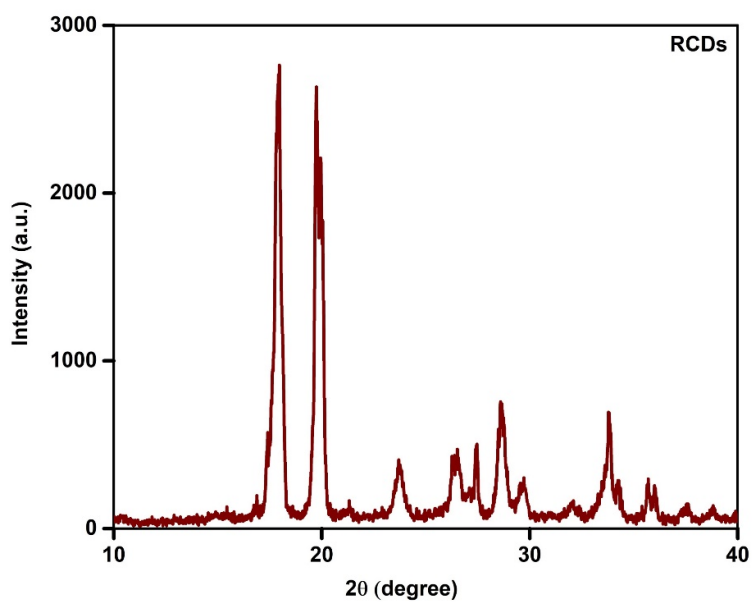


Fig. S4 Powder XRD pattern of RCD (above) and YCD (below)