

*Supplementary Information*

**Synthesis, Characterization, PASS Prediction, Molecular docking and ADME study of Benzo[*b*]thiophen-5-amine based Biologically Active Schiff bases.**

Dr. RAKSHA.V. ZALA<sup>a</sup>, CHANDRESH S. VAYA<sup>\*a,b</sup>, RAKESH JANI<sup>a,c</sup>

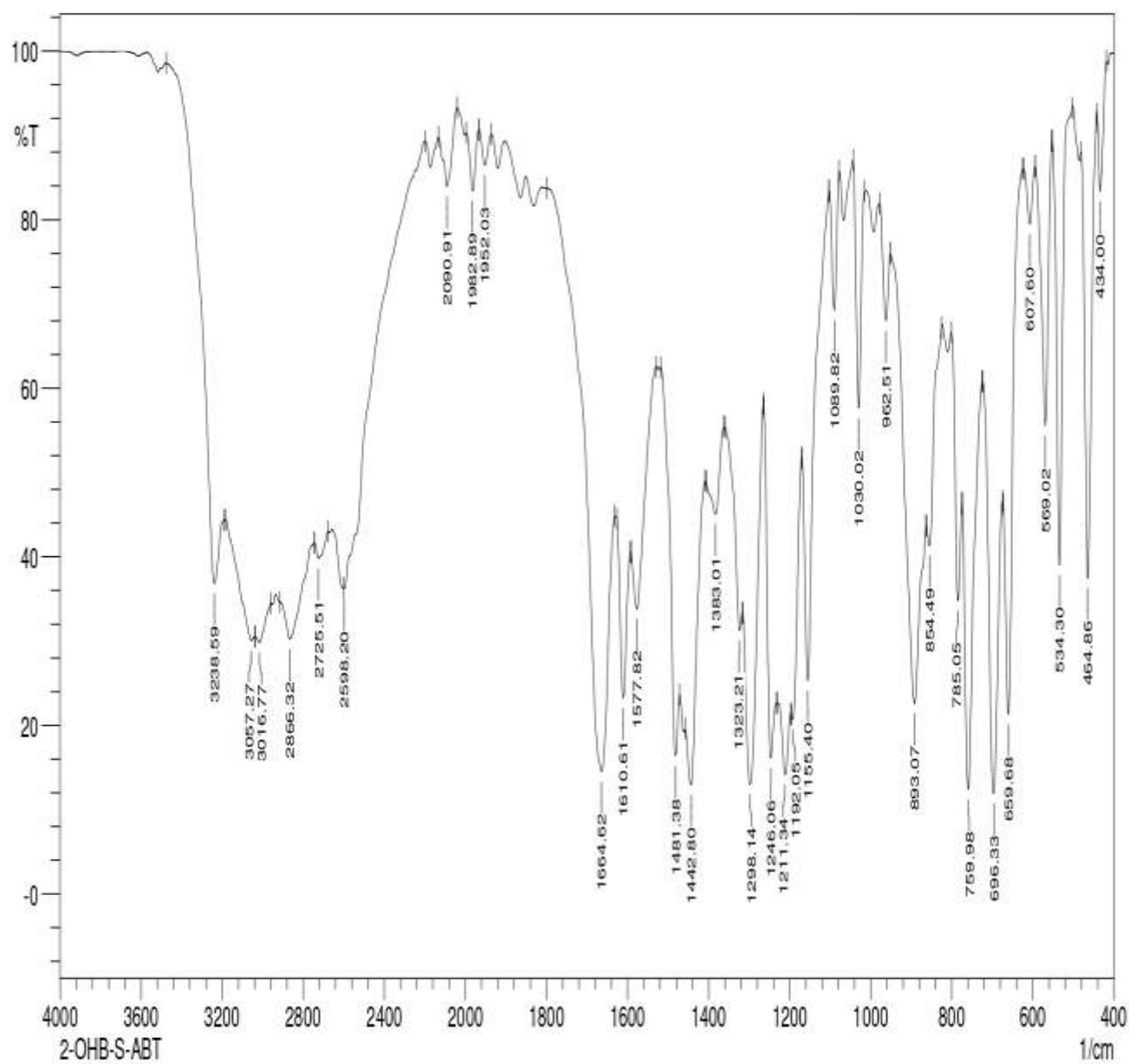
<sup>a</sup>*Department of Chemistry, Kamani Science College and Prataprai Arts College, Amreli-365601, Gujarat, India*

<sup>b</sup>*GMB Polytechnic, Rajula-365560, Gujarat, India*

<sup>c</sup>*Lalan Science College, Bhuj-370001, Gujarat, India*

Corresponding author e-mail: [c.s.vaya2011@gmail.com](mailto:c.s.vaya2011@gmail.com) mob. 8140418339

# FTIR of 2-[(1-benzothiophen-5-yl)imino]methyl}phenol, 5a



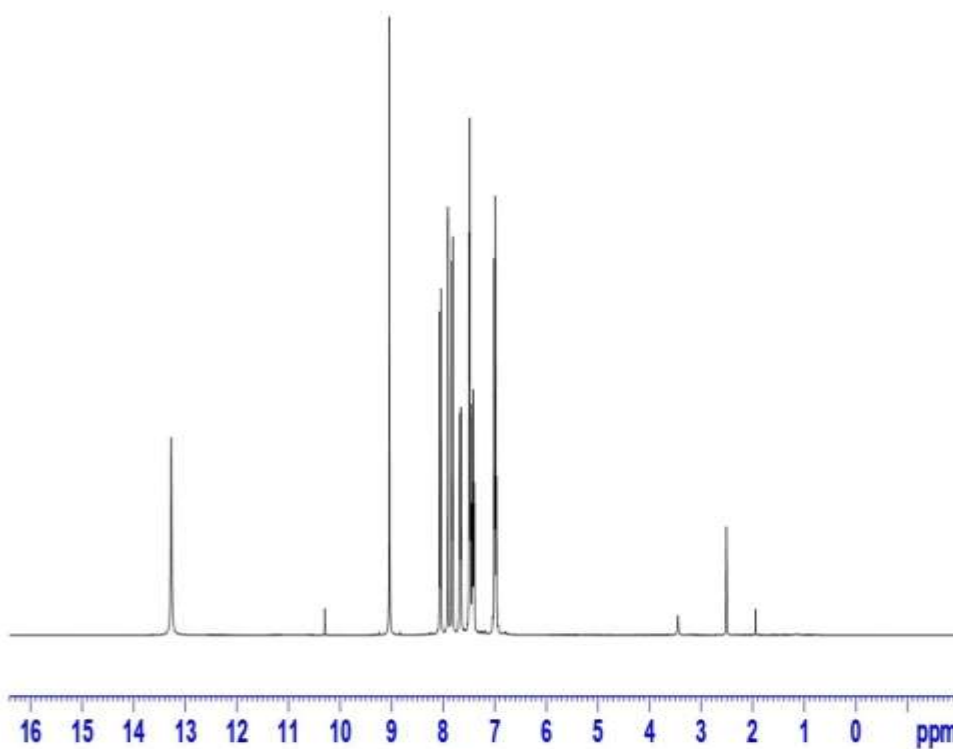
<sup>1</sup>H NMR of 2-[(1-benzothiophen-5-yl)imino]methyl}phenol, 5a



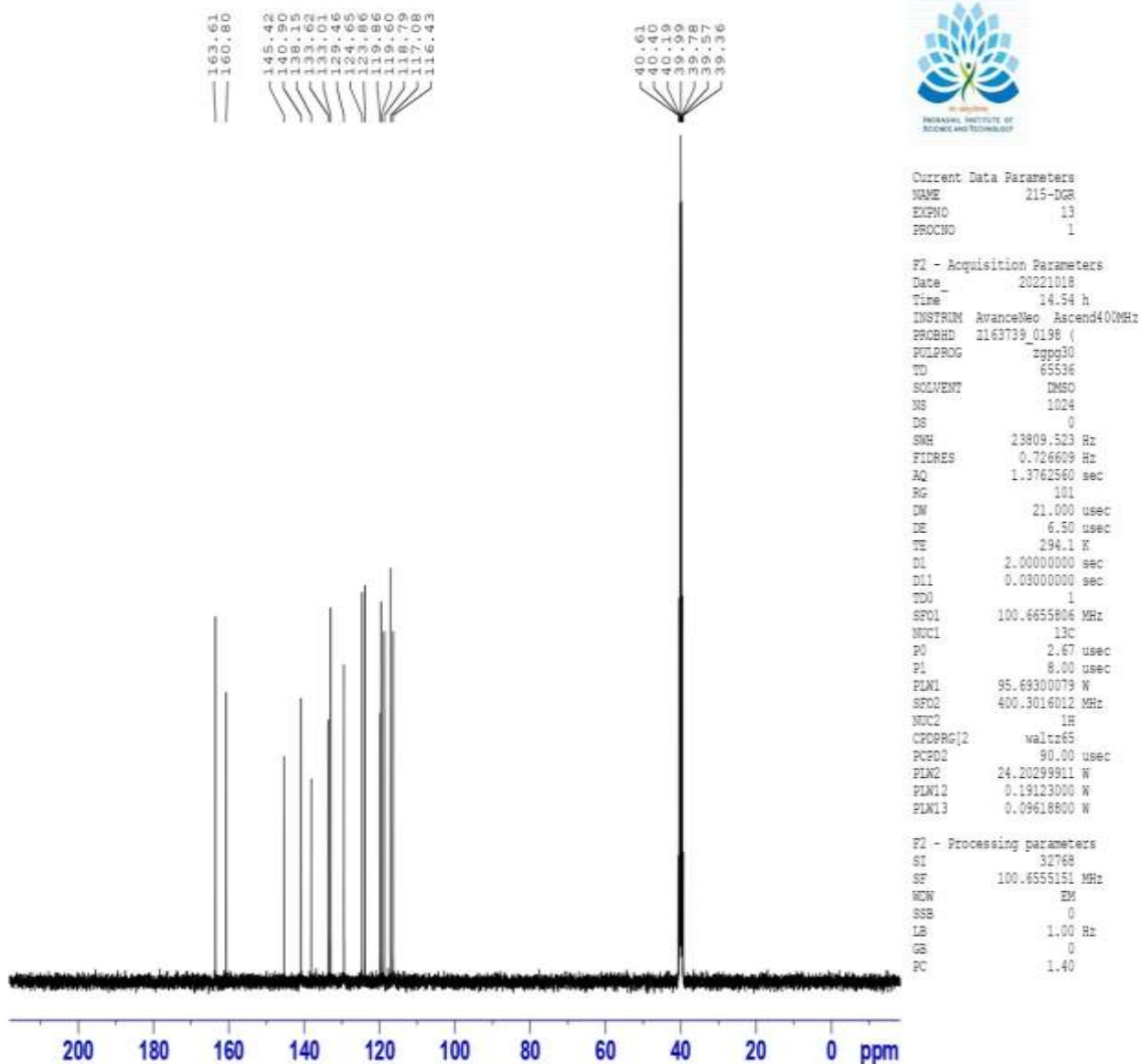
Current Data Parameters  
 NAME 215-DGR  
 EXPNO 12  
 PROCNO 1

F2 - Acquisition Parameters  
 Date\_ 20221018  
 Time 14.52 h  
 INSTRUM AvanceNeo Ascend400MHz  
 PROBRD 2163739\_0198 (   
 PULPROG zg30  
 ID 65536  
 SOLVENT DMSO  
 NS 16  
 DS 0  
 SWH 8196.722 Hz  
 FIDRES 0.250144 Hz  
 AQ 3.9976959 sec  
 RG 53.3333  
 DW 61.000 usec  
 DE 13.89 usec  
 TE 293.6 K  
 D1 1.0000000 sec  
 TD0 1  
 SF01 400.3024719 MHz  
 NUCL1 1H  
 P0 2.67 usec  
 P1 8.00 usec  
 PLW1 24.20299911 W

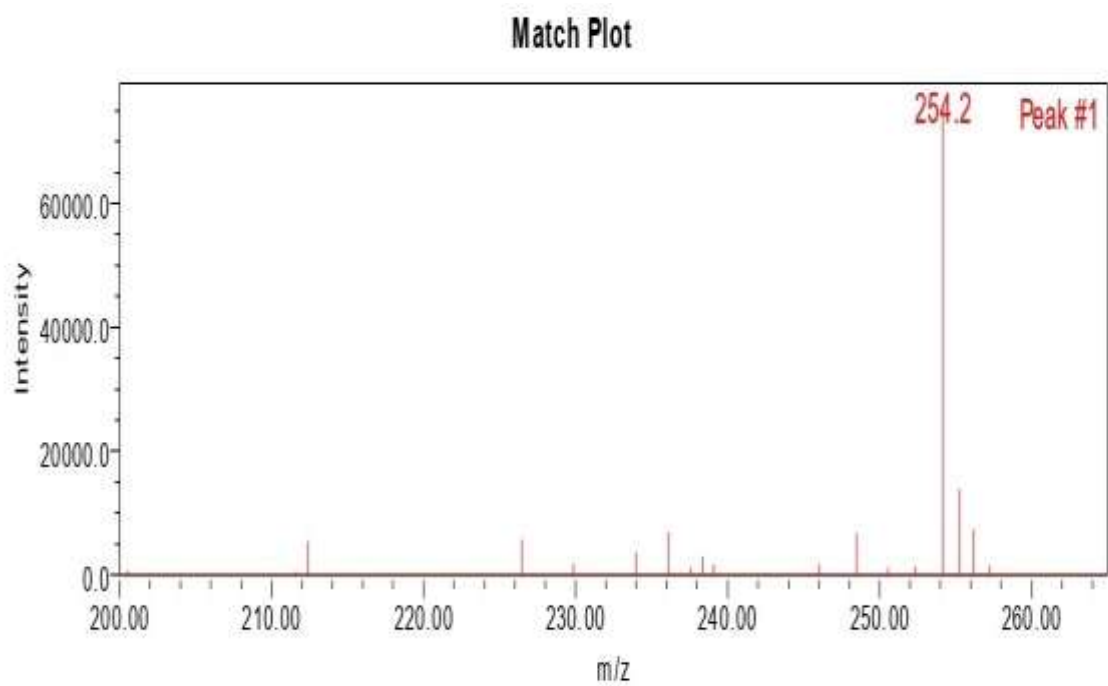
F2 - Processing parameters  
 SI 65536  
 SF 400.3000000 MHz  
 WDW EM  
 SSB 0  
 LB 0.30 Hz  
 GB 0  
 PC 1.00



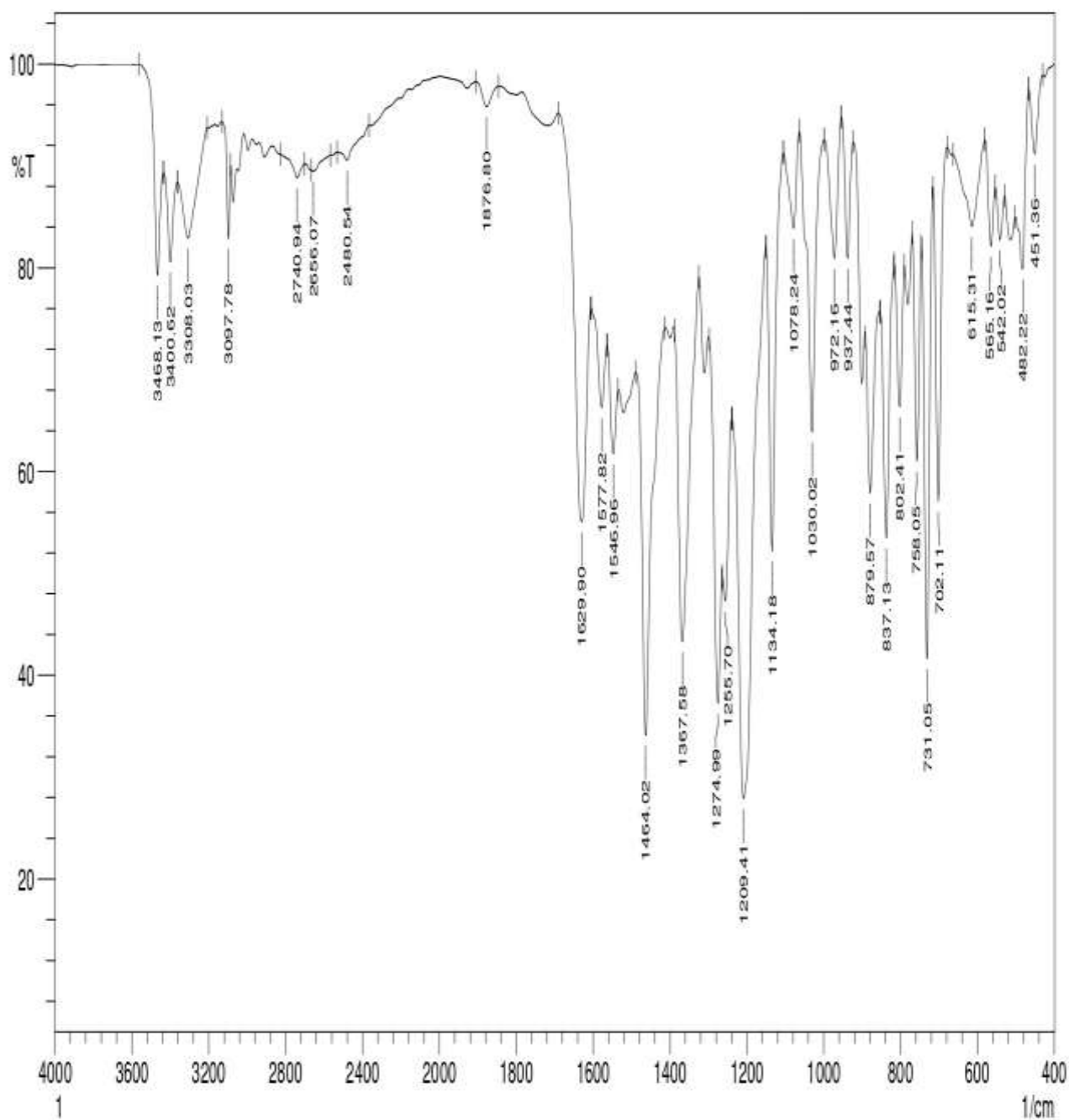
# <sup>13</sup>C NMR of 2-[[1-benzothiophen-5-yl)imino]methyl}phenol, 5a



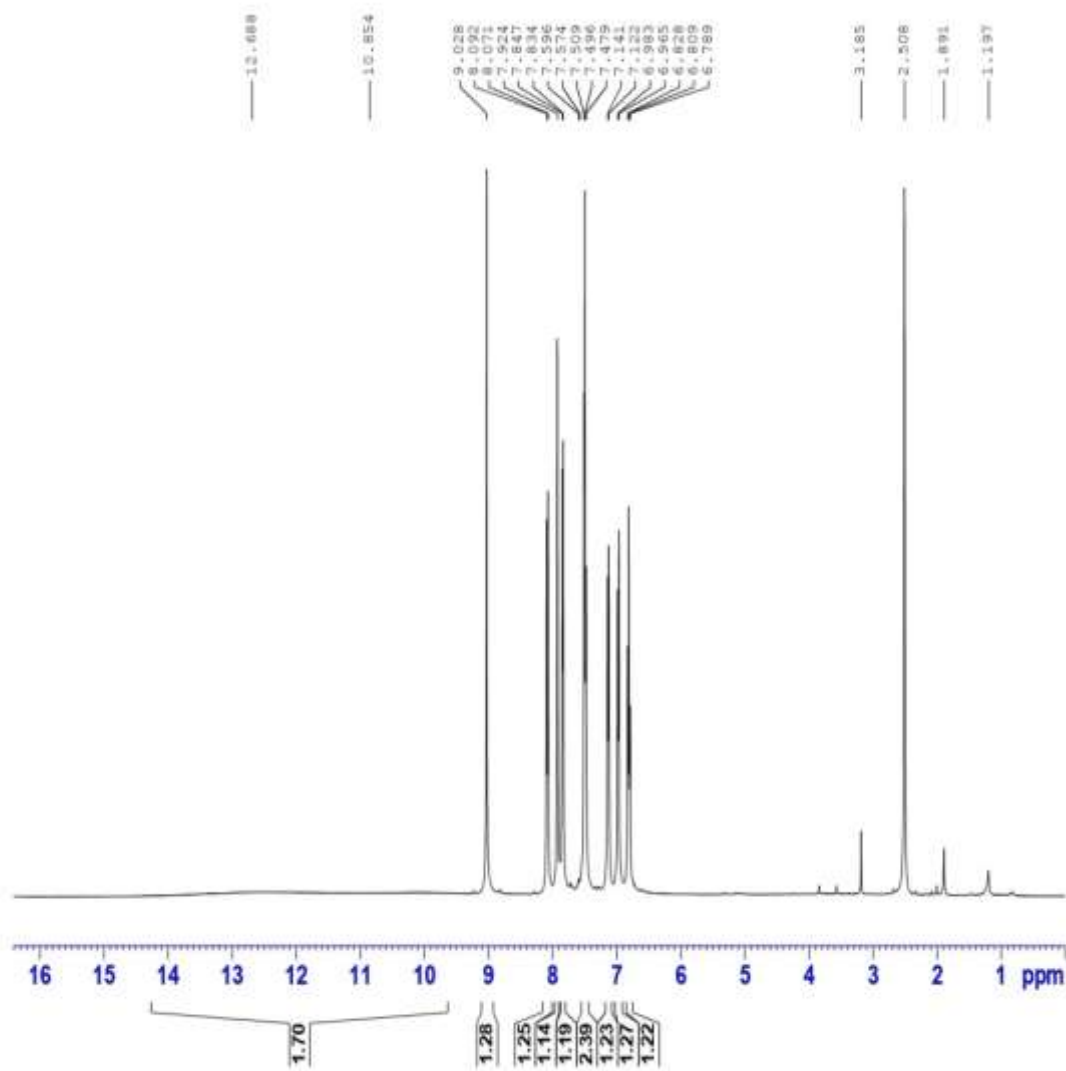
Mass spectrum of 2-[(1-benzothiophen-5-yl)imino]methyl}phenol, 5a



FTIR of 3-[(1-benzothiophen-5-yl)imino]methyl}benzene-1,2-diol, 5b



<sup>1</sup>H NMR of 3-[[1-benzothiophen-5-yl]imino]methyl}benzene-1,2-diol, 5b

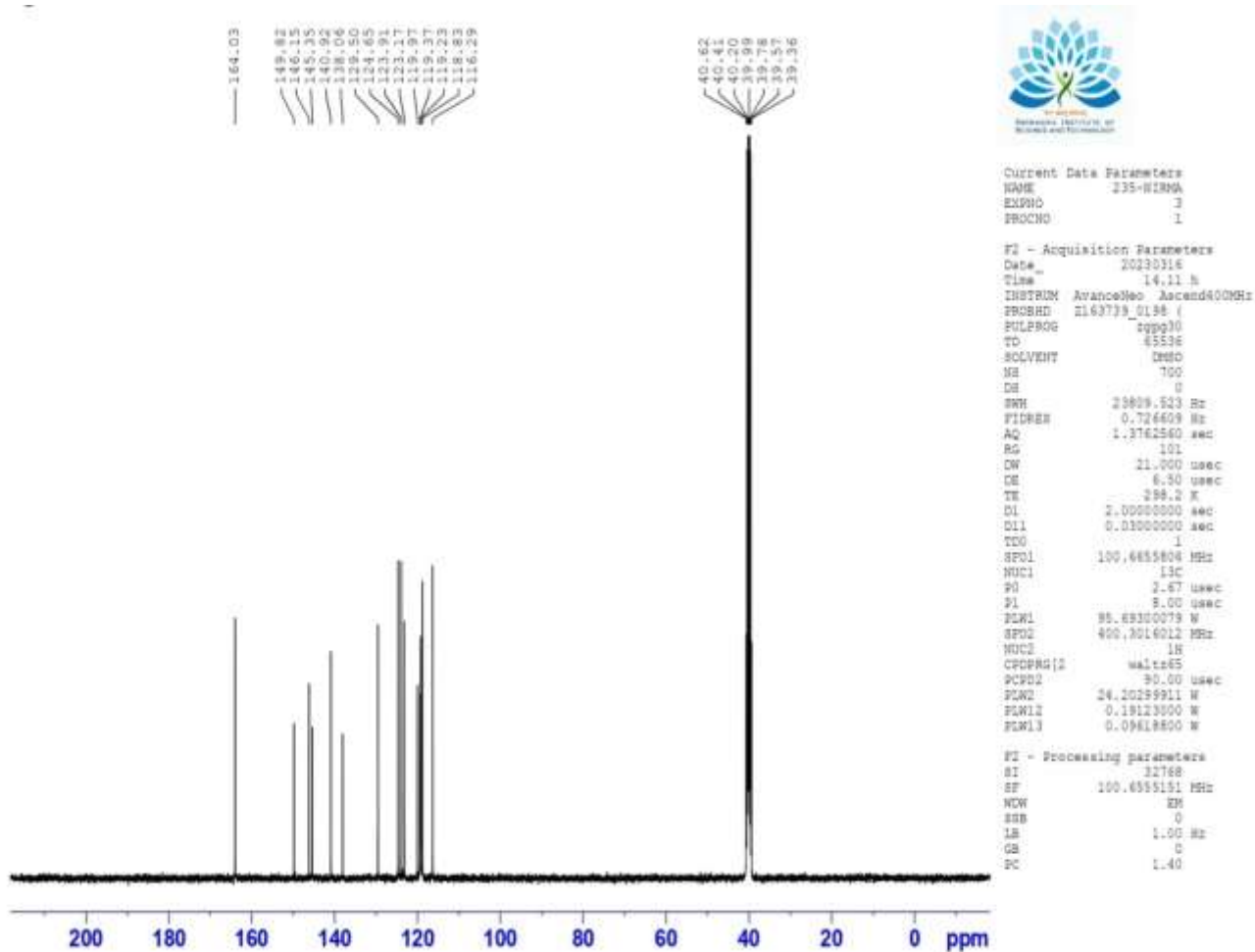


Current Data Parameters  
 NAME 235-NIPMA  
 EXPNO 2  
 PROCNO 1

F2 - Acquisition Parameters  
 Date\_ 20230316  
 Time 11.30 h  
 INSTRUM AvanceNeo Ascend400MHz  
 PROCPRD 2163729\_0198 f  
 PULPROG zg30  
 TD 65536  
 SOLVENT DMSO  
 NS 10  
 DS 0  
 SSB 8196.722 Hz  
 FIDRES 0.250144 Hz  
 AQ 3.9976993 sec  
 RG 97.971  
 DM 61.000 usec  
 DE 13.89 usec  
 TE 297.4 K  
 D1 1.00000000 sec  
 TDO 1  
 SFO1 400.3024719 MHz  
 NUC1 1H  
 PC 2.67 usec  
 PI 6.00 usec  
 PLW 24.20299911 W

F2 - Processing parameters  
 SI 65536  
 SF 400.3000000 MHz  
 MDW 5M  
 SSB 0  
 LB 0.30 Hz  
 GB 0  
 PC 1.00

<sup>13</sup>C NMR of 3-[[1-benzothiophen-5-yl)imino]methyl]benzene-1,2-diol, 5b



Mass spectrum of 3-[[1-(benzothiophen-5-yl)imino]methyl]benzene-1,2-diol, 5b

