

## Supplementary Information

# Isomeric phenylpropanoid from *Stereospermum suaveolens* (Roxb.) DC growing in Bangladesh

Md Moniruzzaman<sup>a</sup>, A M Sarwaruddin Chowdhury<sup>a</sup>, Sania Ashrafi<sup>b</sup>, Choudhury Mahmood Hasan<sup>b</sup>, M Aftab Uddin<sup>c</sup>, Mohammad Sharifur Rahman<sup>b</sup> & Mohammad A Rashid<sup>\*b</sup>

<sup>a</sup> Department of Applied Chemistry & Chemical Engineering, Faculty of Engineering and Technology, University of Dhaka, Dhaka-1000, Bangladesh

<sup>b</sup> Department of Pharmaceutical Chemistry, Faculty of Pharmacy, University of Dhaka, Dhaka-1000, Bangladesh

<sup>c</sup> Department of Genetic Engineering and Biotechnology, Faculty of Biological Sciences, University of Dhaka, Dhaka-1000, Bangladesh

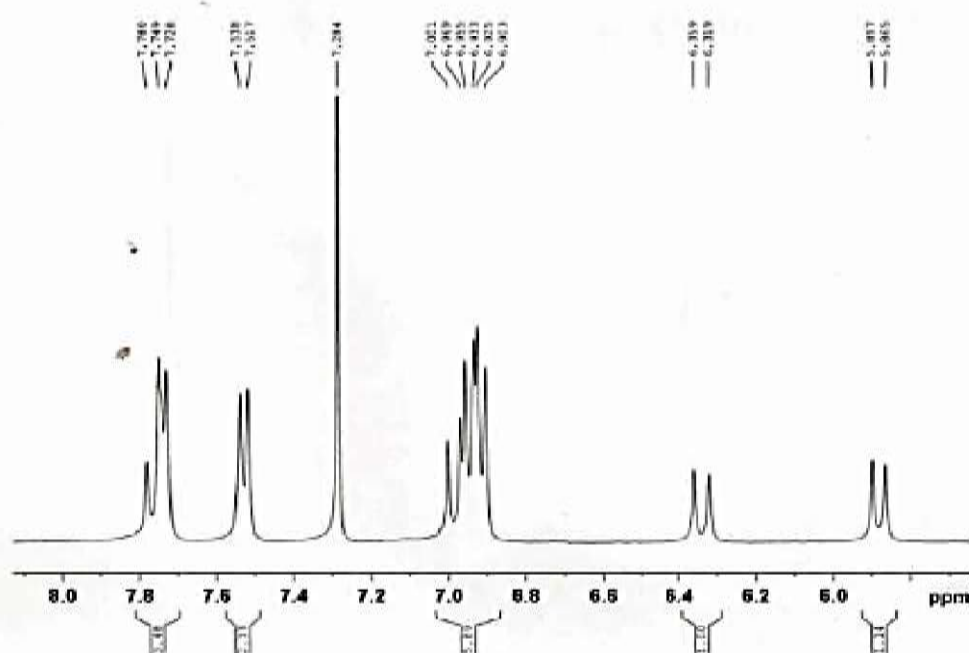
E-mail: monirjaman32@gmail.com, sarwar@du.ac.bd, sania.ashrafi@du.ac.bd, cmhasan@gmail.com, aftabu@du.ac.bd, msr@du.ac.bd, arpharm64@du.ac.bd

Received 25 April 2024; accepted (revised) 5 August 2024

Content	Page
Fig. S1- <sup>1</sup> H- NMR spectrum (400 MHz, CDCl <sub>3</sub> ) of <b>1</b>	2
Fig. S2- Partial expansion of <sup>1</sup> H- NMR spectrum (400 MHz, CDCl <sub>3</sub> ) of <b>1</b>	3
Fig. S3- <sup>13</sup> C- NMR spectrum (400 MHz, CDCl <sub>3</sub> ) of <b>1</b>	4
Fig. S4- <sup>1</sup> H- <sup>1</sup> H-COSY NMR spectrum (400 MHz, CDCl <sub>3</sub> ) of <b>1</b>	5
Fig. S5- Partial expansion of <sup>1</sup> H- <sup>1</sup> H-COSY NMR spectrum (400 MHz, CDCl <sub>3</sub> ) of <b>1</b>	6
Fig. S6- <sup>1</sup> H- <sup>13</sup> C-HSQC NMR spectrum (400 MHz, CDCl <sub>3</sub> ) of <b>1</b>	7
Fig. S7- ESI Mass spectrum of compound <b>1</b>	8
Fig. S8- <sup>1</sup> H- NMR spectrum (400 MHz, CDCl <sub>3</sub> ) of <b>2</b>	9
Fig. S9- Partial expansion of <sup>1</sup> H- NMR spectrum (400 MHz, CDCl <sub>3</sub> ) of <b>2</b>	10
Fig. S10- <sup>13</sup> C- NMR spectrum (400 MHz, CDCl <sub>3</sub> ) of <b>2</b>	11
Fig. S11- ESI Mass spectrum of compound <b>2</b>	12



Wazed Miah Science Research Centre (WMSRC)  
Jahangirnagar University  
Sample: 30  
Operated by: Md. Emdad Hossain, Scientist



Current Data Parameters  
NAME DO\_30  
EXPNO 1  
PROCNO 1

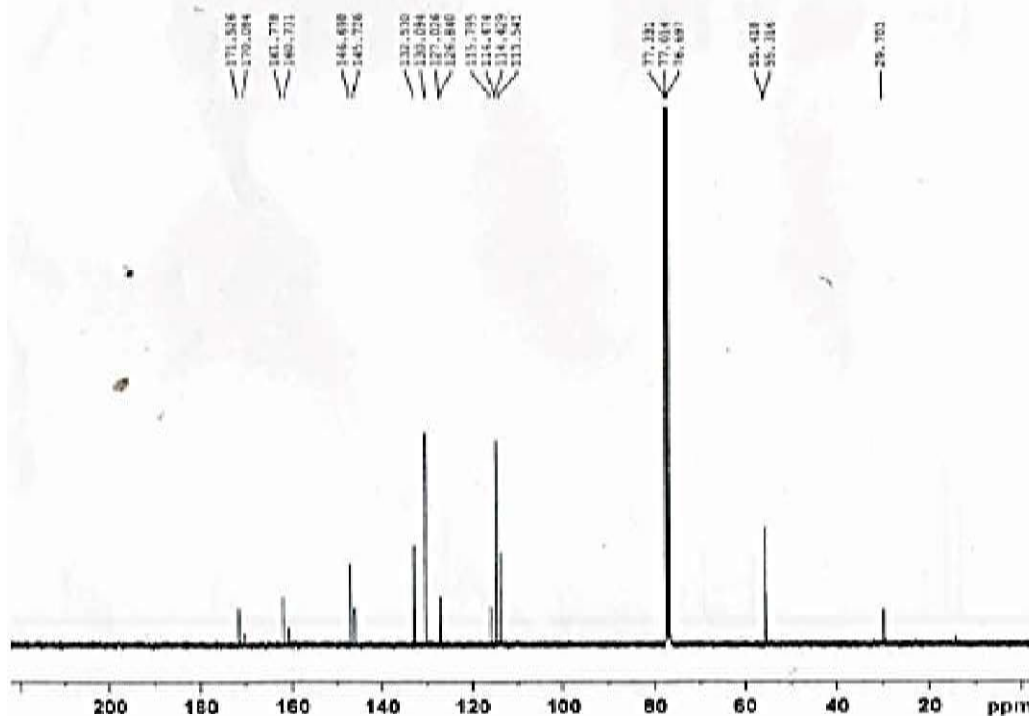
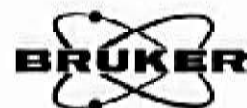
F2 - Acquisition Parameters  
Date\_ 20181022  
Time 11.11  
INSTRUM spect  
PULPROG g ms HASTE 987  
F1F2PROG zg  
TD 65536  
SOLVENT CDCl3  
NS 16  
DS 0  
SWH 8012.920 Hz  
FIDRES 0.122264 Hz  
AQ 4.3894465 sec  
RG 203.5  
CW 62.100 usec  
DE 6.50 usec  
TE 300.5 K  
D1 2.00000000 sec  
TD0 1

===== CHANNEL f1 =====  
SFO1 400.2320011 MHz  
NUC1 1H  
P1 11.20 usec  
PL1 12.00000000 W

F2 - Processing parameters  
SI 131072  
SF 400.2300000 MHz  
WDW EM  
SSB 0  
LB 1.00 Hz  
GB 0  
PC 1.00

Fig. S2- Partial expansion of  $^1\text{H}$ - NMR spectrum (400 MHz,  $\text{CDCl}_3$ ) of 1

Wazed Miah Science Research Centre (WMSRC)  
 Jahangirnagar University  
 Sample: 30, 13C  
 Operated by: Md. Emdad Hossain, Scientist



```

Current Data Parameters
NAME          DU_30
EXPNO         2
PROCNO        1

F2 - Acquisition Parameters
Date_         20190904
Time          15.49
INSTRUM       spect
PROBHD        5 mm PABBO BBO
PULPROG       zgpg
TD            524288
SOLVENT       CDCl3
NS            4096
DS            0
SWH           25252.525 Hz
FIDRES        0.048165 Hz
AQ            10.5809023 sec
RG            208.5
SQ            19.800 usec
DE            6.50 usec
TE            300.2 K
D1            1.00000000 sec
d11           0.03000000 sec
TD0           1

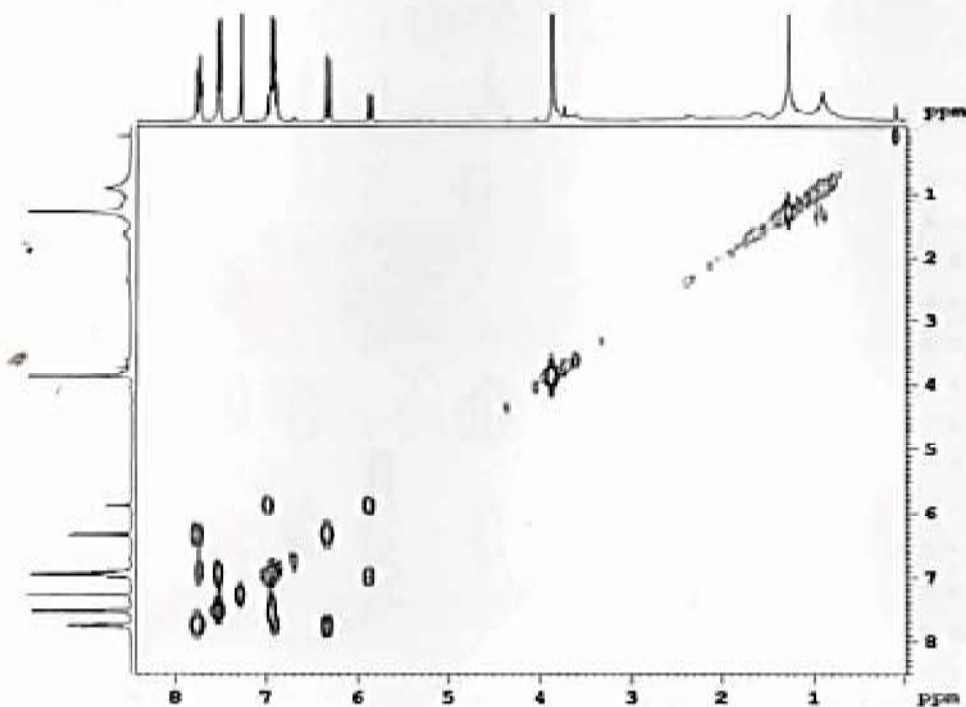
----- CHANNEL F1 -----
SFO1          100.6479778 MHz
NUC1           13C
P1            10.00 usec
PLW1          49.00000000 W

----- CHANNEL F2 -----
SFO2          400.2520011 MHz
NUC2           1H
CPOPCPG2      waltz16
PCPD2         90.00 usec
PLW2          12.00000000 W
PLW3          0.19594000 W
PLW4          0.13053000 W

F2 - Processing parameters
SI            1048576
SF            100.6379135 MHz
SOLV          CDCl3
SSB           0
GB            0
CB            0
PC            1.40
  
```

Fig. S3- <sup>13</sup>C-NMR spectrum (400 MHz, CDCl<sub>3</sub>) of 1

Wazed Hiah Science Research Centre (WMS&C)  
 Jahangirnagar University  
 Sample: 30, cosy  
 Operated by: Md. Emdad Hossain, Scientist



```

Current Data Parameters
NAME          30_30
EXPNO         1
PROCNO        1
PROCRES       1
F2 - Acquisition Parameters
Date_         20170507
Time          9.34
INSTRUM       spect
PROBHD        5 mm BBOBO BB
PULPROG       zgpg30
RG            655.5
AQ            0.177882 sec
SOLVENT       CDCl3
NS            4
DS            4
SWH           802.829 MHz
FIDRES       0.111519 Hz
AQ           0.177882 sec
RG           655.5
TE           300.2 K
NUC1          13C
NUC2          1H
PC           0.00000000 sec
SI           0.00000000 sec
SF           0.00000000 sec
DQ           0.00000000 sec
DE           0.00000000 sec
TE           300.2 K
----- CHANNEL f1 -----
NUC1          13C
P1           12.00000000 sec
PL           0 dB
PC           0.00000000 sec
PR           11.28 sec
PS           11.28 sec
PZ           12.00000000 sec
===== CHANNEL f2 =====
NAME          30_30
EXPNO         1
PROCNO        1
PROCRES       1
F2 - Acquisition Parameters
Date_         20170507
Time          9.34
INSTRUM       spect
PROBHD        5 mm BBOBO BB
PULPROG       zgpg30
RG            655.5
AQ            0.177882 sec
SOLVENT       CDCl3
NS            4
DS            4
SWH           802.829 MHz
FIDRES       0.111519 Hz
AQ           0.177882 sec
RG           655.5
TE           300.2 K
NUC1          13C
NUC2          1H
PC           0.00000000 sec
SI           0.00000000 sec
SF           0.00000000 sec
DQ           0.00000000 sec
DE           0.00000000 sec
TE           300.2 K
----- CHANNEL f3 -----
NAME          30_30
EXPNO         1
PROCNO        1
PROCRES       1
F2 - Acquisition Parameters
Date_         20170507
Time          9.34
INSTRUM       spect
PROBHD        5 mm BBOBO BB
PULPROG       zgpg30
RG            655.5
AQ            0.177882 sec
SOLVENT       CDCl3
NS            4
DS            4
SWH           802.829 MHz
FIDRES       0.111519 Hz
AQ           0.177882 sec
RG           655.5
TE           300.2 K
NUC1          13C
NUC2          1H
PC           0.00000000 sec
SI           0.00000000 sec
SF           0.00000000 sec
DQ           0.00000000 sec
DE           0.00000000 sec
TE           300.2 K

```

Fig. S4-  $^1\text{H}$ - $^1\text{H}$ -COSY NMR spectrum (400 MHz,  $\text{CDCl}_3$ ) of 1

Wazed Miah Science Research Centre (WMSRC)  
 Jahangirnagar University  
 Sample: 30, cosy  
 Operated by: Md. Khand Hossain, Scientist

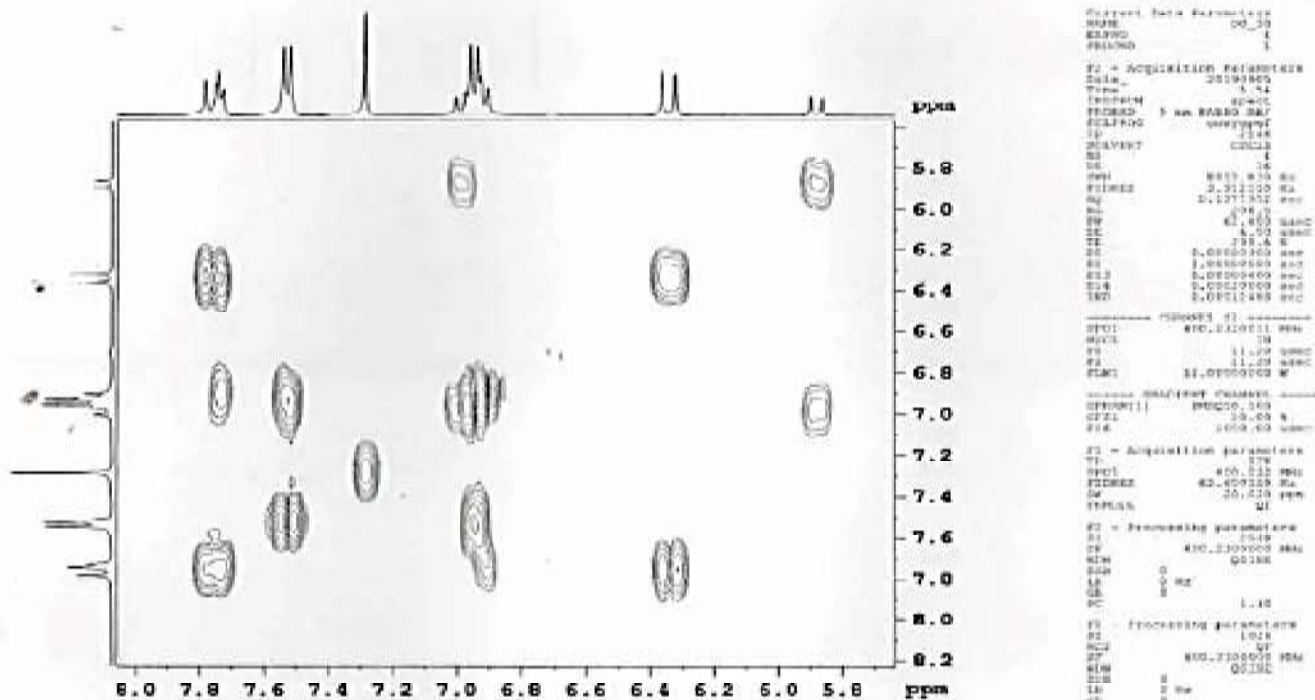


Fig. S5- Partial expansion of  $^1\text{H}$ - $^1\text{H}$ -COSY NMR spectrum (400 MHz,  $\text{CDCl}_3$ ) of **1**



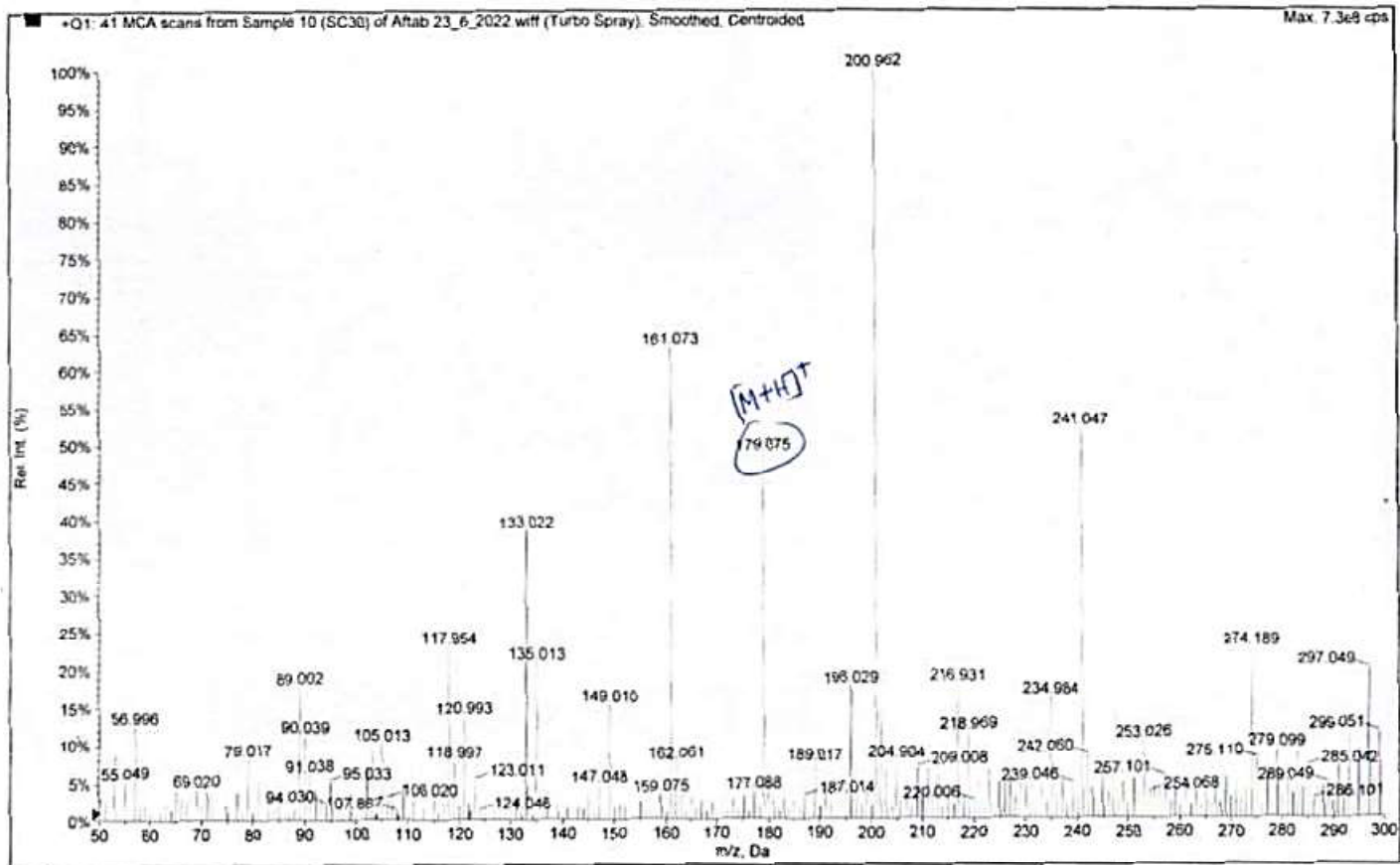
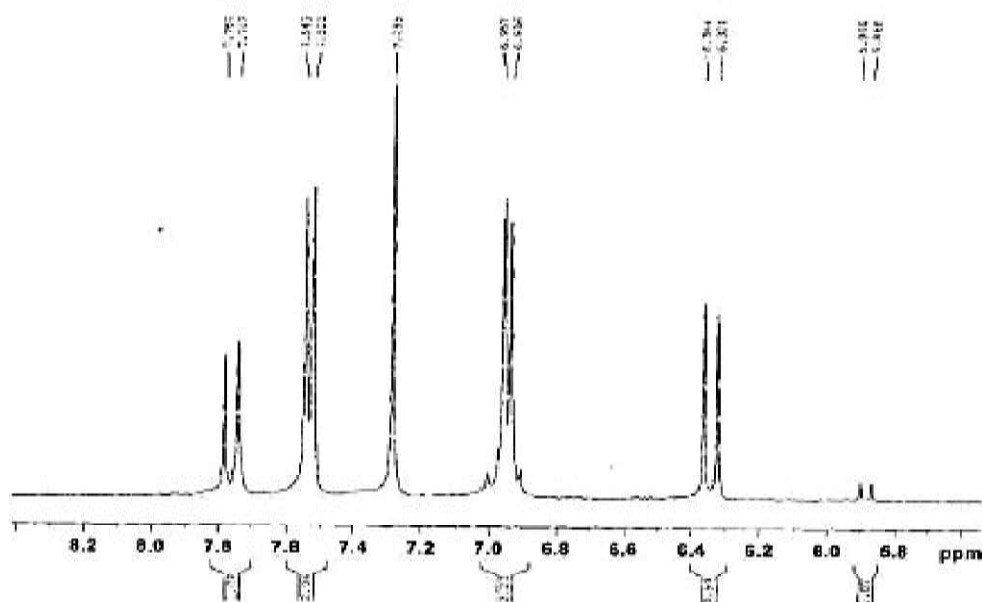


Fig. S7- ESI Mass spectrum of compound 1



Naked High Science Research Centre (NHSRC)  
 Jahangirnagar University  
 Sample: 24  
 Operated by: Md. Emdad Hossain, Scientist



```

Current Data Parameters
NAME: 01_24
EXPNO: 1
PROCNO: 1

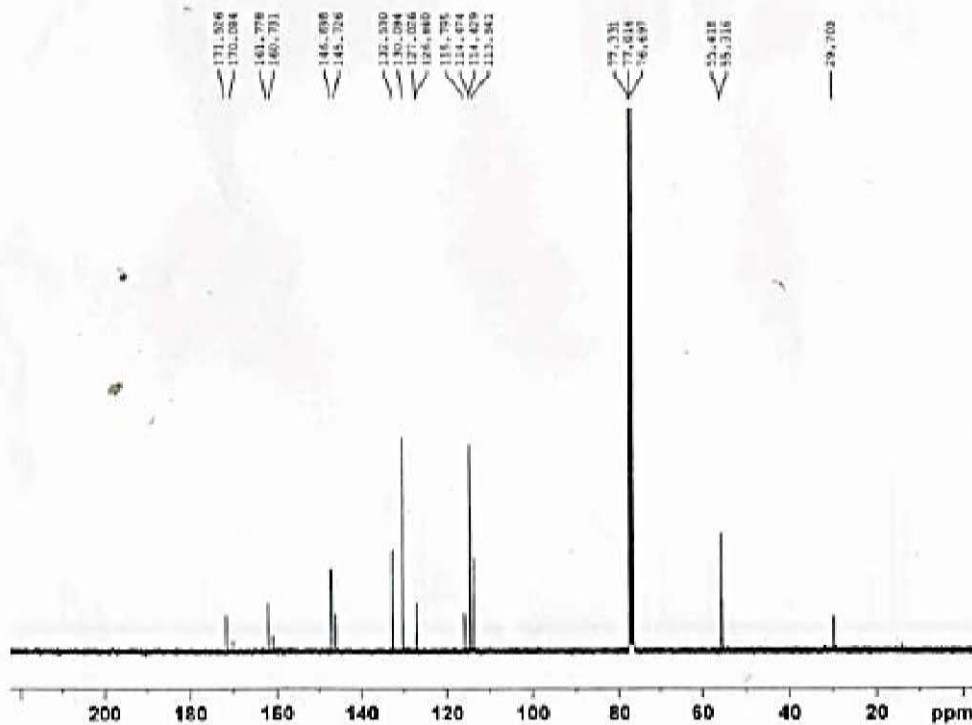
F2 - Acquisition Parameters
Date_ 20150908
Time: 13.48
INSTRUM: spect
PROBHD: 5 mm QNP 500
PULPROG: zgpg30
TD: 65536
SOLVENT: CDCl3
NS: 2048
DS: 4
SWH: 12000.000 Hz
FIDRES: 0.185890 Hz
AQ: 1.7722500 sec
RG: 618.33
AQ: 11.000 usec
DE: 6.50 usec
TE: 298.2 K
D1: 1.0000000 sec
DELTA: 1

===== CHANNEL f1 =====
NUC1: 13C
P1: 11.20 usec
PL1: 0.0000000 dB

F2 - Processing parameters
SI: 32768
SF: 400.260000 MHz
WDW: EM
SSB: 0
LB: 1.00 Hz
GB: 0
PC: 1.00
  
```

Fig. S9- Partial expansion of <sup>1</sup>H-NMR spectrum (400 MHz, CDCl<sub>3</sub>) of 2

Mazed Miah Science Research Centre (WMSRC)  
 Jahangirnagar University  
 Sarplet 24, 13C  
 Operated By: Md. Endad Hossain, Scientist



```
Current Data Parameters
NAME      DD_30
EXPNO    2
PROCNO   1

F2 - Acquisition Parameters
Date_    20190904
Time     15.49
INSTRUM  spect
PROBHD   5 mm PABBO BB/
PULPROG  zgpg
TD       524288
SOLVENT  CDCl3
NS       4096
DS       0
SWH      25252.525 Hz
FIDRES   0.648165 Hz
AQ       10.3809023 sec
RG       208.5
DF       19.800 usec
DE       6.50 usec
TE       300.2 K
D1       1.00000000 sec
D11      0.03000000 sec
TD0      1

----- CHANNEL f1 -----
SFO1     100.6279770 MHz
NUC1      13C
PI       10.00 usec
PLW1     49.00000000 W

----- CHANNEL f2 -----
SFO2     400.2320011 MHz
NUC2      1H
CPDPRG12 waltz16
PCPD0    90.00 usec
PCPD2    12.00000000 W
PLW12    0.18584000 W
PLW13    0.15053000 W

F2 - Processing parameters
SI       104874
SF       100.6279135 MHz
WDW      EM
GB       0
LB       0.30 Hz
GB       0
PC       1.40
```

Fig. S10- <sup>13</sup>C- NMR spectrum (400 MHz, CDCl<sub>3</sub>) of 2

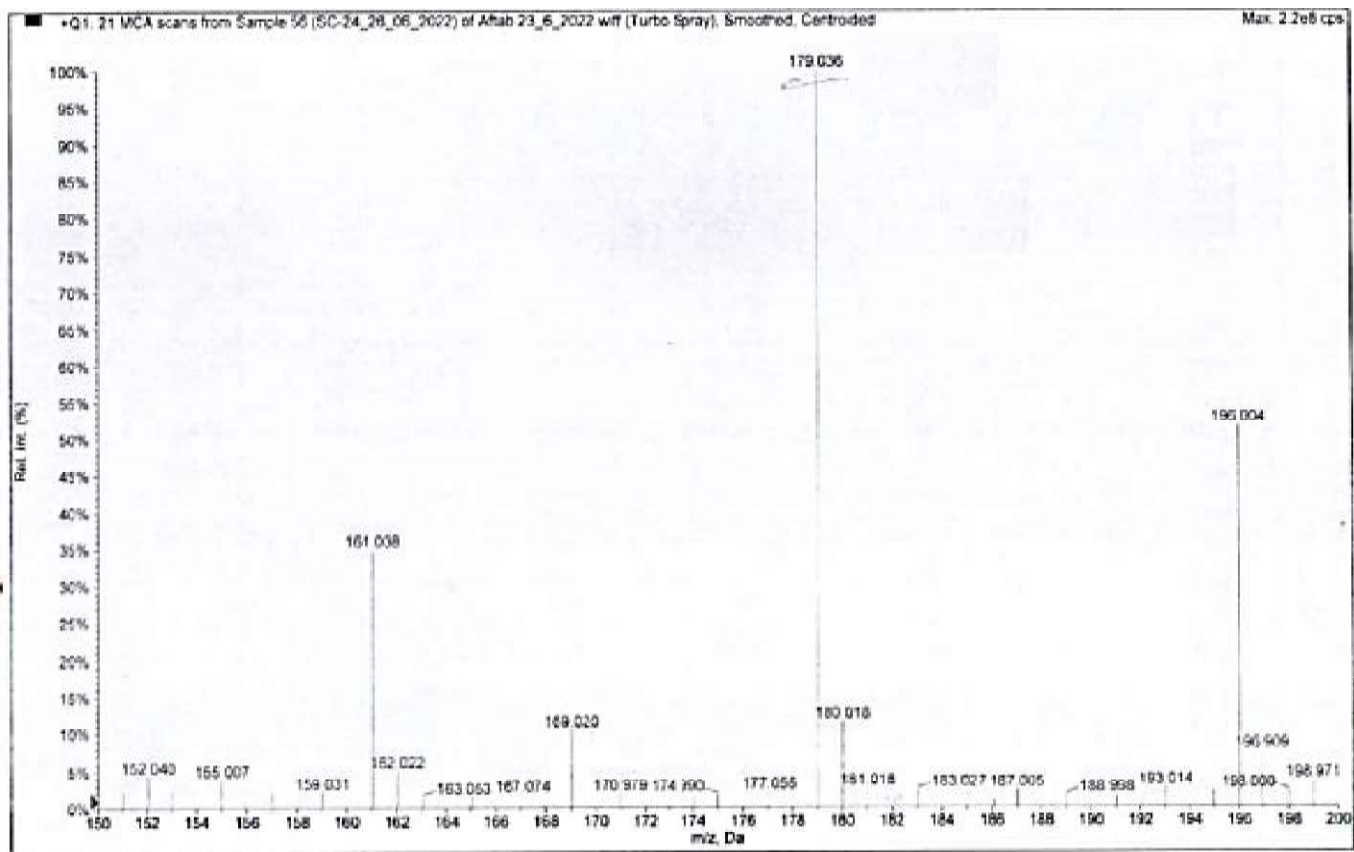


Fig. S11- ESI Mass spectrum of compound 2