



Economics of Integrated Research Data Management: Enhancing Efficiency and Impact

Angad Munshi^a and Ashim Raj Singla^b

^aFaculty, New Delhi Institute of Management (NDIM), New Delhi, 110062 & Researcher, Indian Institute of Foreign Trade (IIFT), New Delhi, 110016, India

Email: angad.munshi@ndimdelhi.org; angadres2020@gmail.com

^b Professor & Head (IT Infrastructure & CoE), Indian Institute of Foreign Trade (IIFT), New Delhi, 110016, India.
Email: arsingla@iift.edu

Received: 09 August 2024; Accepted: 20 August 2024

This paper delves into the economic implications of integrated research data management (IRDM), analyzing its transformative potential and associated challenges. We explore the intersection of data, research practices, and economic understanding. The study leverages data collected from researchers to examine real-world IRDM practices. Our analysis reveals that effective data management practices play a critical role in reshaping the landscape of research and development (R&D). Key findings highlight the economic benefits associated with IRDM, including: Enhanced efficiency through streamlined data management processes; Increased research reproducibility, leading to more reliable findings; Facilitation of interdisciplinary collaboration, fostering innovation. These benefits translate to tangible economic advantages, such as cost savings, resource optimization, and ultimately, increased research productivity. Furthermore, the analysis suggests that IRDM fosters innovation in research methodologies and informs evidence-based policymaking, as corroborated by the respondent responses. The paper concludes by proposing specific recommendations for researchers, institutions, and policymakers. These recommendations address navigating the cultural shift towards data literacy, investing in robust technological infrastructure, and upholding ethical considerations surrounding data management. In conclusion, this research significantly contributes to advancing research practices in the big data era by emphasizing the transformative potential of IRDM for all stakeholders.

Keywords: Integrated research data management, Data management, Research data, Economics of data, Data privacy and security, Collaboration, Data-driven insights, Research and innovation

Introduction

The research landscape has undergone a transformative shift with the exponential growth in the volume and complexity of data. Data once considered a by-product,¹ has emerged as a cornerstone in shaping economic analyses² and policy decisions.^{3,4} As economies become more interconnected and dynamic, researchers now recognize the indispensability of data in uncovering patterns, making predictions, and informing evidence-based policymaking.

The multifaceted nature of economic data, encompassing variables such as market trends, consumer behaviour, and macroeconomic indicators, presents researchers with both unprecedented opportunities and formidable challenges. The sheer magnitude of available data, often referred to as 'big data,' offers the potential to uncover nuanced insights and refine economic models. However, the effective utilization of this wealth of information is contingent

upon overcoming the challenges associated with data management, processing, and integration.

Challenges in economic data management include the need to handle diverse data types, ensure data quality, and address issues related to data privacy and security.⁵ The traditional methods of data management are proving insufficient to cope with the sheer volume and complexity of contemporary economic datasets. These challenges not only impede the speed and efficiency of research but also raise concerns about the reproducibility and reliability of research findings.

Rationale

In the face of these challenges, integrated research data management emerges as a pivotal solution to propel research into a new era of efficiency, reproducibility, and overall impact. The rationale behind prioritizing integrated data management in the research landscape is rooted in several key considerations as reflected in Fig.1 below.



Fig. 1 — Rationale for Prioritizing Integrated Data Management in Research

Enhancing Efficiency

Integrated research data management streamlines the process of data collection, storage, and analysis. By consolidating disparate datasets and ensuring seamless interoperability, researchers can significantly reduce the time and resources traditionally spent on data preparation. This efficiency gain empowers researchers to focus more on the core aspects of their research—developing models, testing hypotheses, and deriving meaningful conclusions.

Improving Reproducibility

Reproducibility is a cornerstone of scientific research, and it ensures the credibility of findings and models. Integrated data management facilitates reproducibility by providing a standardized and transparent framework for data handling. Researchers, peers, and policymakers can easily replicate studies, verify results, and build upon existing work, fostering a culture of trust and accountability in research.

Maximizing Overall Impact

The ultimate goal of research is to influence policy, guide business decisions, and contribute to a deeper understanding of domain-centric phenomena. Integrated data management contributes to the overall impact of research by enabling the generation of more robust and timely insights. When researchers can efficiently leverage diverse datasets and ensure the reliability of their analyses, the resulting research becomes more relevant and influential in shaping policies and practices.

In essence, the rationale behind embracing integrated research data management in research practices is rooted in its ability to surmount the challenges posed by the data-driven era. By enhancing efficiency, ensuring reproducibility, and maximizing overall impact, integrated data management stands as an essential enabler for research across domains seeking to navigate and leverage the complexities of contemporary data.

Literature Review

Economics of Data

The economic value of data has become a focal point in various sectors, influencing decision-making

processes and organizational strategies. Research across diverse industries underscores the transformative power of data in creating value, optimizing operations, and driving innovation.^{6,7}

Data as an Asset: Data's worth as a valuable asset is gaining wider recognition. Several studies emphasize the economic impact of leveraging data as a strategic resource, with implications for improved productivity, competitiveness⁸ and revenue generation.

Monetization Strategies: Scholars such as^{9,10,11} delve into the diverse ways organizations monetize data. From targeted advertising to personalized product recommendations, understanding the economic potential of data-driven strategies has become imperative for businesses seeking a competitive edge.

Impact on Economic Growth: Exploring the macroeconomic perspective, the work of^{12,13,14} investigates the contribution of data-driven industries to overall economic growth. Their findings highlight the positive correlation between investments in data-related technologies and enhanced economic performance.

Data-driven Decision Making: The literature also delves into how data influences decision-making processes. Studies,^{15,16} examine the adoption of data-driven decision-making in organizations, emphasizing its potential to improve efficiency, reduce risks, and optimize resource allocation.

Research Data Management

The evolution of research data management practices has played a pivotal role in shaping the quality and reliability of economic research. As the complexity and volume of data have increased, researchers and institutions have adapted their approaches to ensure robust data management.

Historical Perspective: Early as well as recent studies^{17,18,19} trace the historical development of research data management practices. These works highlight the shift from manual record-keeping to digital data repositories, emphasizing the challenges faced and lessons learned along the way.

Technological Advancements: The integration of technology into research data management is a recurring theme. Several research studies^{20,21,22,23} explore the impact of emerging technologies, such as cloud computing and machine learning, on data storage, retrieval, and analysis in the context of economic research.

Open Science and Collaboration: The paradigm of open science has influenced research data management. There has been growing research^{24,25,26,27} on how open data initiatives can promote collaboration and openness among researchers. This, in turn, is believed to improve the trustworthiness and replicability of studies.

Policy and Governance: The literature also addresses the development of policies and governance frameworks for research data management. Several studies^{28,29,30,31,32} have examined the effectiveness of institutional policies and international collaborations in promoting data integrity, security, and ethical use in research. These studies encompass a broader range of relevant issues as well.

The reviewed literature highlights the critical interplay between the economic value of data and research data management practices. A comprehensive understanding of how data's economic significance varies across sectors, coupled with an awareness of evolving research data management strategies, is essential for researchers navigating the intricate landscape of contemporary research endeavours.

Methodology

Data Collection:

Sources of Data: The data collection process for this research on the economics of integrated research data management involved a multi-faceted approach, incorporating both primary and secondary sources.

Primary Sources: Surveys and interviews were conducted with researchers, and professionals directly involved in research and data management. These interactions aimed to gather first-hand insights into their experiences, challenges faced, and perceptions regarding the impact of integrated research data management.

Secondary Sources: Extensive review and extraction of relevant data from academic journals, conference proceedings, industry reports, and government publications provided a comprehensive understanding of existing literature on the subject. This secondary data formed the foundation for comparative analysis and the identification of key trends and patterns.

Types of Data: The collected data spanned various dimensions pertinent to the economics of integrated research data management. This included:

Research Practices: Information on data collection, storage, and analysis methods employed by researchers.

Institutional Data Policies: Insights into the data management policies and practices implemented by academic institutions and research organizations.

Methodologies Employed: To ensure the reliability and relevance of the collected data, a combination of quantitative and qualitative methods was employed:

Surveys: Structured surveys were distributed to researchers, focusing on their experiences with integrated research data management, perceived benefits, and challenges faced. The survey instrument incorporated Likert scales, multiple-choice questions, and open-ended inquiries to capture a comprehensive range of responses.

Interviews: In-depth interviews were conducted with key stakeholders, providing qualitative insights into their perspectives on the economic implications of integrated data management. The interviews allowed for a nuanced exploration of individual experiences and opinions.

Literature Review: A systematic review of existing literature served as a foundational aspect of data collection. Academic databases, journals, and reputable repositories were explored to gather information on the theoretical frameworks, case studies, and empirical findings related to the economics of integrated research data management.

Data Analysis:

Analytical Techniques: The analysis of the collected data involved a structured and systematic approach to derive meaningful insights into the economic impact of integrated research data management. Key analytical techniques included:

Descriptive Statistics: Quantitative data from surveys were subjected to descriptive statistical analyses to generate summary measures. These statistics provided a quantitative overview of respondents' perspectives.

Thematic Analysis: Qualitative data from interviews and open-ended survey responses underwent thematic analysis. Themes and patterns were identified, allowing for the extraction of qualitative insights and the generation of in-depth narratives.

Comparative Analysis: The secondary data from literature review and primary data were subjected to comparative analysis. This involved identifying commonalities, divergences, and trends across different studies and perspectives, facilitating a comprehensive understanding of the economic implications of integrated research data management.

Content Analysis: Institutional data policies and practices were subjected to content analysis. This involved categorizing and interpreting textual data to discern common threads and variations in approaches to integrated research data management within academic and research institutions.

The combination of quantitative and qualitative analytical techniques aimed to provide a holistic understanding of the economic impact of integrated research data management, offering insights that are both statistically robust and contextually rich and are presented in the next section.

Survey Analysis: Insights and Observations

This section delves into the analysis of the survey data, presenting key findings and drawing inferences about current research data management practices.

A total of 100 questionnaires were distributed to researchers via a Google Docs form, spanning various domains, with efforts made to engage an equitable number of respondents from each field. We received responses from approximately 71 participants. Furthermore, alongside the questionnaires, we also engaged in face-to-face discussions with several researchers.

The various responses received from respondents to a set of 12 questions have been summarised in Table 1. According to the responses received, the data indicated that approximately 72% of respondents were from the Social Sciences domain, 15.5% from Arts and Humanities, and 13% from Science and Technology (S&T). The analysis is visually represented in the following Figures 2 – 10.

Table 1 — Summation of data integration techniques and their potential applications based on the responses received

[1] Technique	[2] Common Tools	[3] Use Case	[4] Research Use	[5] Data Integration Process: Summation of Key Challenges and Strategies	[6] Key Recommendations for Effective Research Data Management
Manual Techniques (Excel, Access, Databases)	Excel, MS Access, MySQL	Simple data cleaning, merging small datasets	Yes	<ol style="list-style-type: none"> 1. Identification and Collection: Identifying and gathering diverse data sources (Primary & Secondary) using tools like Excel, MS Access, or databases such as MySQL, and utilizing platforms like Google Forms for efficient data collection. 2. Data Cleaning and Preparation: Ensuring data integrity through rigorous cleaning processes to remove errors, duplicates, and missing data, essential for seamless integration. 	<ol style="list-style-type: none"> 1. Data Quality and Security Enhancement: <ul style="list-style-type: none"> • Improved Interoperability: Streamlining data exchange between various systems and platforms through better interoperability facilitates seamless integration. • Robust Data Governance: Implementing robust measures like data quality assurance, data integrity checks, and comprehensive security protocols safeguards the research data throughout its lifecycle. • Standardized Data Management Policies: Establishing and enforcing clear data management policies and Standard Operating Procedures (SOPs) ensures consistent and compliant data handling practices. 2. Optimized Data Use and Analysis: <ul style="list-style-type: none"> • Advanced Data Analytics Tools: Utilizing advanced data analytics tools empowers researchers with enhanced analysis capabilities, enabling them to extract valuable insights. • Continuous Monitoring and Improvement Cycle: Recognizing data integration as an ongoing process, fostering a culture of continuous monitoring, evaluation, and improvement for the integration architecture and practices is crucial. Adaptation to evolving research needs, technological advancements, and past project experiences ensures ongoing effectiveness.
Spreadsheet & Statistical Software	SPSS, MiniTab	Data manipulation, basic analysis	Yes (limited for your research)	<ol style="list-style-type: none"> 1. Data Transformation and Standardization: Adapting data from various sources to a consistent format through transformation techniques, vital for compatibility and coherence in integration. 2. Quality Control and Assurance: Conducting thorough quality assessments to validate the integrity, relevance, and consistency of integrated datasets, ensuring reliable outcomes. 	

(Contd.)

Specialized Software (Gephi)	Gephi	Network analysis, visualization (if used applicable)	Not currently used	<ol style="list-style-type: none"> 1. Analysis and Visualization: Employing statistical methods such as regression analysis for insights, and utilizing tools like SPSS, spreadsheets, or Gephi for data analysis and visualization. 2. Strategic Integration Approaches: Employing targeted selection, comparative analysis, and knowledge graph methodologies to effectively integrate and interpret multi-source data. 	<ul style="list-style-type: none"> • Researcher Training and Standardization: Equipping researchers with the necessary training on data management best practices, with a particular emphasis on data format and vocabulary standardization, promotes efficient data utilization. • Implementation of Integrated Data Management Framework: Developing and implementing a well-defined and readily accessible integrated data management framework fosters awareness, understanding, and ease of use among researchers.
Web Forms (Google Forms)	Google Forms	Data collection from participants	Potentially for future studies	<ol style="list-style-type: none"> 1. Engagement with Technical Expertise: Collaborating with technical experts for guidance and support in complex data integration processes, enhancing proficiency and efficiency. 2. Continual Learning and Adaptation: Remaining open to further studies and advancements in data integration techniques, such as data apportioning, to enhance research capabilities and outcomes. 	<ol style="list-style-type: none"> 3. Data Infrastructure and Standardized Practices <ul style="list-style-type: none"> • Standardization: Standardizing data formats and vocabularies across the board facilitates seamless data integration. • Automation (automating data cleaning and integration): Leveraging automation tools for data cleaning and integration processes streamlines workflows and reduces manual effort, paving the way for research breakthroughs. • Investment in Data Infrastructure & Expertise: Investing in robust data infrastructure and fostering data expertise ensures secure storage, effortless retrieval, and clear understanding of research data. • Centralized Online Data Source: Establishing a centralized online data repository containing well-documented, accurate, and genuine research data in a common, accessible format (e.g., downloadable Excel) would be a valuable resource for the Indian research community. <p>By implementing the above recommendations and considerations, respondents opined that India can significantly enhance the efficiency, reliability, and overall impact of integrated data management in its research endeavours, fostering a more robust and productive research environment.</p>

Over two-thirds (65%) of respondents reported using data from multiple sources in their research projects (Fig. 2). Among these researchers, the majority (Fig. 3) indicated typically integrating 2-5 different data sources per project. Majority of the respondents use two major data management tools

such as spreadsheets followed by statistical software like R and STATA (Fig. 4). Regarding data integration quality assurance, the methods employed to ensure the consistency and quality of data from various sources during integration primarily include, data format standardization, data cleaning and

harmonization procedures and documentation of data provenance and collection methods as shown in Fig. 5. With regard to the data change tracking modifications throughout the research process are concerned, mostly detailed documentation is preferred as indicated in Fig. 6.

So far as data sharing with collaborators is concerned, the respondents preferably utilize shared storage platform such as cloud storage to share data

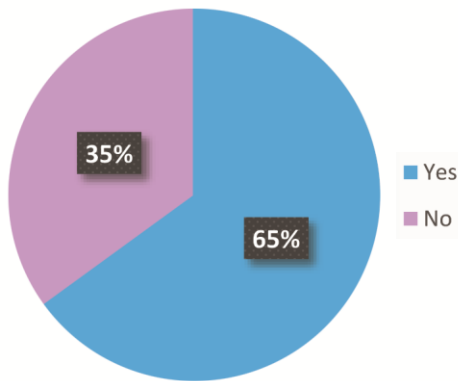


Fig. 2 — Do Researchers Use Multiple Data Sources?

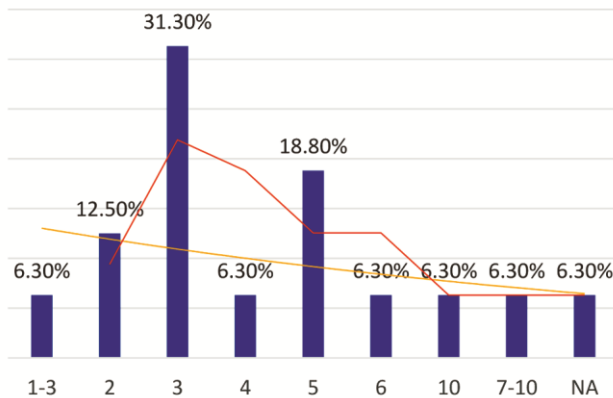


Fig. 3 — Number of data sources per project (For those who answered "yes" to the previous question)

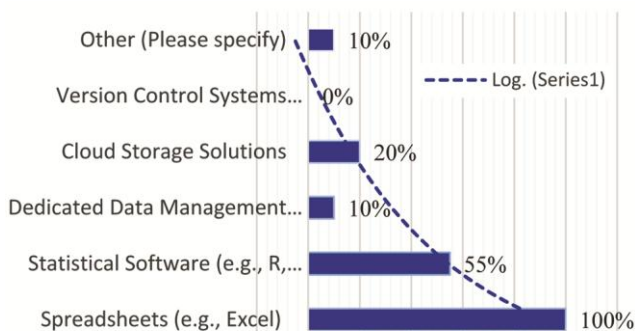


Fig. 4 — Data management tools and software utilized

with collaborators on their research projects (Fig.7). In response to having institutional data management policy in place, only 30% of the respondents responded in affirmative (Fig. 8). Over 44% respondents feel that the impact of institution's data management policy on researcher's data management practices strongly influences all aspects of data management practices, while 22% each feel that the having institutional policy provides some guideline and adaptation of practices are project based; for other

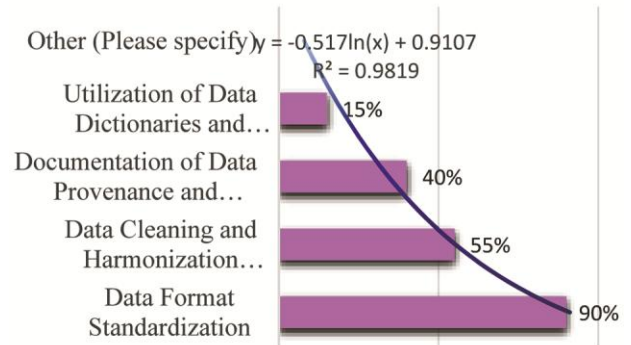


Fig. 5 — Methods employed for assurance in data integration

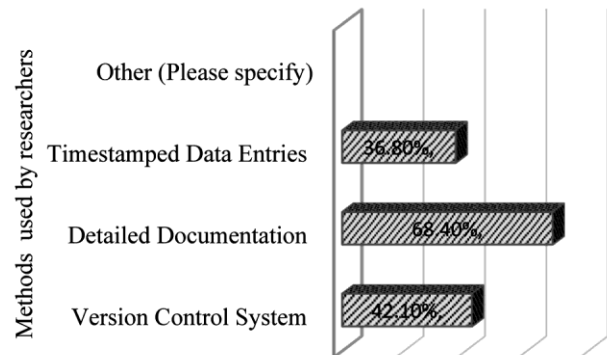


Fig. 6 — Methods used for tracking data modifications in the research process

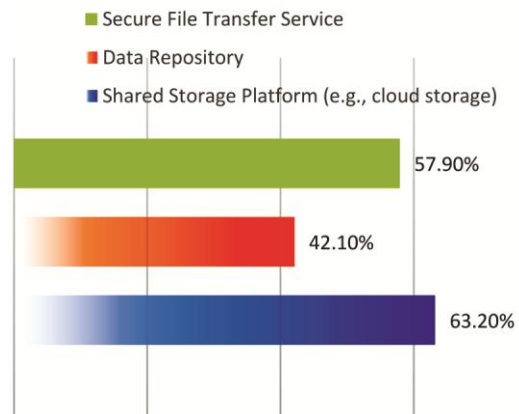


Fig. 7 — Preferred methods for collaborative data sharing

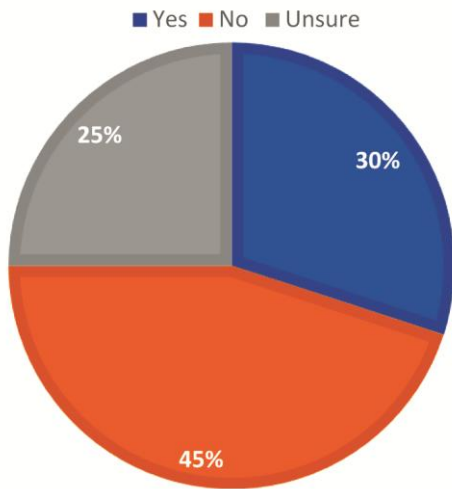


Fig. 8 — Formal research data management policy adoption by research institutions

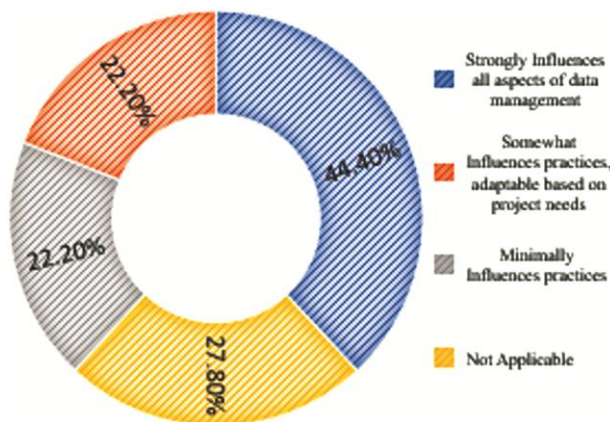


Fig. 9 — Impact of institutional data management (DM) policy on researcher's DM practices

22%, policy has minimal impact on their RDM practices, though they are aware of RDM policy (Fig. 9). The most significant challenges of researchers associated with managing data from multiple sources in research include, ensuring data quality and consistency data standardization and harmonization, and data security and access control (Fig. 10). In response to the open-ended question pertaining to describing the most effective strategy researcher have employed for integrating data from multiple sources in their research, an assorted platter of responses received and collated and the summary is presented in Table 1, column 5 (data integration process: summation of key challenges and strategies). By implementing these, India can foster a more efficient research environment. Key focus areas include data quality, policy enforcement, analytics, continuous improvement, training, and standardized

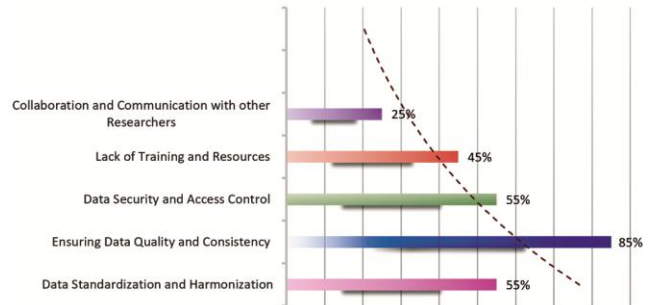


Fig. 10 — Key challenges in multi-source research data management

formats. Additional considerations include standardization, automation, infrastructure, expertise, and centralized data sources. Similarly, with regard to what improvements, in researcher's view, could be made to facilitate more efficient and reliable integrated data management in research endeavours?, the responses collated have been summed up in Table 1, column 6 (key recommendations for effective research data management). Building on the identified challenges, this analysis proposes a three-pronged approach to strengthen research data management practices: enhancing data quality and security, optimizing data utilization and analysis, and strengthening data infrastructure and standardized practices.

Key Insights from the Data Analysis

Summarizing the key takeaways and emphasizing the importance of data management practices for fostering a more efficient research environment in India, the analysis focuses on the following:

Research benefits from combining data sources (text, code, web content). This approach strengthens analysis, fosters collaboration, and leads to more reliable conclusions. However, managing this data (quality, compatibility, privacy) requires careful planning for valid results. Therefore, meticulous planning and effective data management strategies are essential to ensure the validity and reliability of analyses. In essence, while leveraging data from multiple sources is advantageous, it demands careful planning and rigorous methodologies to yield meaningful insights.

Researchers commonly integrate data from multiple sources to enrich their analyses, with the number of sources varying greatly based on research goals and available data. Projects may involve anywhere from a few to several dozen sources, encompassing diverse data types like surveys,

experiments, observational data, administrative records, and publicly available datasets. The decision on the number of sources hinges on research requirements and data availability, emphasizing the importance of aligning data integration with specific research goals.

Data management tools vary depending on the nature of the data and tasks involved. Common tools include spreadsheets for basic analysis and visualization, statistical software like R or STATA for advanced analysis, and dedicated platforms like SQL or NoSQL databases for storing large volumes of data. Cloud storage solutions are vital for secure data storage and sharing, while version control systems like Git manage changes to code and data. Specialized tools like Open Refine or pandas in Python are used for data cleaning and pre-processing to ensure data quality before analysis. These tools collectively enable efficient data management, analysis, and collaboration across diverse projects.

Ensuring data consistency and quality during integration is paramount for trustworthy analysis. This is achieved through a comprehensive approach, including standardizing data formats, cleaning and harmonizing to rectify errors, and documenting data provenance for transparency. Additionally, utilizing data dictionaries and codebooks ensures clear and consistent variable descriptions. Data profiling techniques further analyze data structure and quality. These methods collectively guarantee reliable analysis by ensuring integrated data is standardized (formats like CSV), cleaned (errors fixed), documented (origin and methods), and described (dictionaries) accurately. Ultimately, this rigorous process yields consistent, accurate, and suitable data for analysis, fostering trustworthy research findings.

To ensure data integrity and reproducible research, robust tracking of modifications throughout the research process is essential. This is achieved through several key methods: Version Control Systems (e.g., Git) -provide a complete history with comments, enabling collaborative work, rollback capabilities, and transparent data management. Detailed Documentation- complements version control by chronicling changes made, rationales behind modifications, and relevant context. This fosters understanding and facilitates future analysis. Timestamped Entries- Dates and times pinpoint alterations, allowing researchers to correlate changes with project activities and ensure accountability.

These methods create a robust framework, promoting transparency, reproducibility, and ultimately, trustworthy research outcomes. This comprehensive approach fosters the credibility, trustworthy analysis, and reliability of research findings.

In facilitating data sharing for research collaboration, various methods are employed, tailored to data nature and collaborator preferences. For instance, Shared Storage Platform- Utilizing cloud storage platforms like Google Drive or Dropbox allows for secure and centralized access, enabling seamless data exchange and version control among collaborators. Data Repository -Depositing data into repositories such as Figshare or Zenodo provides centralized sharing and archiving, enhancing discoverability and citation with persistent identifiers (DOIs) and metadata standards. Secure File Transfer Service - For sensitive or large datasets, secure transfer services like FTP or SFTP encrypt data during transmission, ensuring confidentiality and integrity. Dedicated Data Sharing Platform - Depending on project needs, specialized platforms like Slack or Microsoft Teams facilitate communication and file sharing, streamlining collaboration with real-time messaging and integration capabilities. Physical transfer of storage devices like hard drives is less common due to security concerns. Employing a combination of these methods ensures efficient and secure data sharing, promoting collaboration, reproducibility, and transparency in research endeavours.

The development of Institutional Data Management Policies (IDMPs) in India is still evolving, reflecting a broader global recognition of the importance of data management in research and academic settings. Increasingly, universities, research institutes, and funding agencies in India are acknowledging the necessity for robust data management policies to uphold data integrity, security, and accessibility. While several prominent Indian institutions likely have established IDMPs or guidelines covering various facets of data management, such as collection, storage, sharing, and preservation, the implementation of these policies can vary significantly based on institutional factors like size, focus areas, and funding sources. Despite the absence of a centralized registry tracking institutions with IDMPs, various indicators suggest a rising emphasis on data management practices in India. Government initiatives, exemplified by the National

Data Sharing and Accessibility Policy (NDSAP), advocate for responsible data management practices, indicating a growing trend of IDMP adoption within Indian institutions. (Also see: <https://meity.gov.in/writereaddata/files/National-Data-Governance-Framework-Policy.pdf>). The information above suggests a growing trend of IDMP adoption in Indian institutions.

An institution's Data Management Policy (IDMP) on research data management practices reveals that researchers are guided by, but adaptable to, the policy's framework. The analysis reveals a balanced approach. In terms of guided by the IDMP, institutional policies provide a valuable framework for researchers. They establish standards and best practices for data collection, storage, sharing, and preservation. Compliance with the IDMP ensures data security, integrity, and adherence to ethical and legal requirements. While, with regard to adaptable to project needs, researchers recognize the importance of tailoring their data management approach to the specific needs and constraints of each project. Project-specific factors like data type, volume, sensitivity, and collaboration requirements might necessitate adjustments to the IDMP framework. This flexibility allows for optimal project outcomes while maintaining compliance. This balanced approach fosters robust data management practices. Researchers leverage the IDMP as a foundation, ensuring adherence to institutional guidelines. At the same time, they retain the flexibility to adapt their practices to the unique demands of each research project, ultimately promoting data quality, research reproducibility, and trustworthy research findings.

The analysis identifies significant challenges in managing data from multiple sources in research. Data standardization and harmonization pivotal as integrating data from various sources is hindered by inconsistencies in formats, units, and collection methods, necessitating reconciliation for accurate analysis. Secondly, ensuring data quality and consistency for addressing issues like missing values, errors, and biases which is crucial to maintain consistency across datasets, requiring thorough cleaning, validation, and documentation. There are variations in the third top challenge, while some prioritize data security and access control with other researchers as a primary challenge, others consider collaboration and communication. Effective collaboration requires clear communication channels

and workflows, while ensuring data security demands robust governance practices and access protocols. These challenges underscore the complexities of managing diverse data sources and emphasize the need for robust strategies and tools to address them effectively.

The analysis highlights the effectiveness of establishing a comprehensive data integration plan as a critical strategy for combining data from multiple sources in research. Following a structured approach, where the key steps may include-Data inventory and assessment for conducting a thorough assessment of available data sources to evaluate their relevance, quality, and compatibility; Data standardization and harmonization for standardizing data formats, structures, and terminology across different sources to ensure consistency; Data cleaning and pre-processing for implementing rigorous procedures to address errors, inconsistencies, and missing values in the datasets; Integration methodology selection for choosing appropriate integration methodologies based on the nature of the data and research objectives; Integration framework implementation for developing a framework outlining the workflow, tools, and techniques for combining data from multiple sources; Validation and quality assurance for conducting thorough checks to ensure the accuracy, completeness, and reliability of the integrated dataset; and Documentation and transparency for documenting all steps of the integration process to ensure transparency and reproducibility.

This structured approach emphasizes careful planning, data cleaning, and ongoing monitoring to ensure high-quality, reliable data integration, supporting research objectives effectively. It's important to acknowledge that actual integration processes can be more complex depending on specific data and goals. Nonetheless, following this approach enables the generation of meaningful insights from diverse sources and support research objectives.

The key to unlocking the potential of interwoven data lies in a two-pronged attack- technological advancements and a societal transformation. A Shared language with focus on standardized formats and universal understanding (ontologies) are paramount for seamless integration. Automating the weave necessitates implementing automated data integration technological tools and algorithms that can expedite the process, minimizing human error. Guaranteeing the enhanced data quality assurance requires

advanced techniques to ensure the reliability and accuracy of the interwoven data. Laws of the weave demand establishing clear rules governing data exchange, access, and security foster trust and accountability. Equipping the weavers need providing training to researchers in data management for empowering them to effectively integrate information. A collaborative loom to develop collaborative platforms for fostering data sharing, communication, and collaboration to streamline the process is required. Finally, valuing the weavers by offering incentives and recognition encourage researchers to adopt best practices, leading to a culture of data stewardship. By addressing these areas, we pave the way for efficient, reliable integrated data management in research, improving reproducibility, transparency, and impact, ultimately strengthening the fabric of research outcomes.

6. Challenges and Barriers in Integrated Research Data Management:

While effective research data management demonstrably enhances research efficiency across multiple domains, its ability to fully unlock its transformative potential is impeded by several critical challenges.

6.1 Data Privacy and Security:

Integrated research data management faces significant challenges in ensuring the privacy and security of sensitive information. Addressing these challenges is crucial for maintaining the trust of stakeholders and preventing unauthorized access or data breaches:

Compliance with Regulations: Stricter data protection regulations, such as General Data Protection Regulation (GDPR) (<https://gdpr-info.eu/>) and HIPAA (<https://www.hhs.gov/hipaa/index.html>), impose complex compliance requirements. Researchers and institutions must navigate these regulations to ensure that integrated data management practices adhere to legal frameworks, adding a layer of complexity to data handling.

Ethical Considerations: Balancing the need for data access with ethical considerations poses a challenge. Researchers must establish protocols for responsible data use, considering the potential societal impact of their work and safeguarding the rights and privacy of individuals represented in the data.

Data Encryption and Access Controls: Implementing robust encryption mechanisms and

access controls is essential to protect sensitive data. However, striking a balance between data security and accessibility for authorized users presents a challenge, especially when collaborating across institutions or disciplines.

Data Sharing Dilemma: Integrated data management often involves sharing datasets across organizations. Ensuring data privacy while facilitating collaboration requires robust agreements, secure data-sharing platforms, and a shared commitment to ethical data use among collaborators.

6.2 Infrastructure and Technology:

The adoption of integrated data management technologies in research faces barriers related to infrastructure and technological considerations. Overcoming these barriers is essential for harnessing the full potential of integrated data management:

Data Integration Complexity: Research often involves integrating diverse datasets, and the complexity of merging disparate data sources can be a significant barrier. Incompatibilities in data formats, structures, or semantics may hinder seamless integration, requiring sophisticated solutions and interoperability standards.

Resource Requirements: Implementing integrated data management systems may demand substantial resources, including financial investments, skilled personnel, and robust computational infrastructure. Smaller institutions or researchers with limited budgets may face challenges in adopting and maintaining such systems.

Legacy Systems and Interoperability: Existing legacy systems within institutions can pose obstacles to adopting integrated data management technologies. Ensuring interoperability with legacy systems and minimizing disruptions during the transition to integrated solutions requires careful planning and investment.

Technological Obsolescence: Rapid technological advancements may result in the obsolescence of integrated data management technologies. Researchers and institutions need to stay abreast of emerging technologies to avoid investing in solutions that may become outdated quickly, leading to potential inefficiencies and additional costs.

Data Standardization Issues: Lack of standardized data formats and metadata conventions across disciplines can impede seamless integration. Establishing common standards is challenging due to

the diversity of data types and structures used in economic research, requiring collaborative efforts to develop and implement standards.

In conclusion, addressing challenges related to data privacy, security, infrastructure, and technology is essential for the successful implementation of integrated research data management in economics. Overcoming these barriers requires a multidimensional approach, involving collaboration between researchers, institutions, and policymakers to establish best practices, ethical guidelines, and supportive technological ecosystems.

8. Recommendations for Improved Research Data Management

Based on the survey analysis and the discussion on integrated data management, this section provides actionable recommendations to enhance research data management practices.

Thus, drawing on the insights from the preceding analysis, the following recommendations aim to optimize research data management effectiveness and facilitate robust research endeavours.

Recommendations for Researchers, Institutions and Policy makers:

8.1 Data Management Planning:

Create Data Management Plans (DMPs): Develop clear and comprehensive DMPs at the outset of research projects. Outline data collection, storage, and sharing protocols to ensure organized and transparent data practices.

Adopt Standardized Metadata Practices:

Use Common Metadata Standards: Employ standardized metadata practices to enhance data interoperability. Adhering to common standards ensures that datasets are well-documented, facilitating collaboration and reproducibility.

Prioritize Data Security and Privacy:

Implement Encryption and Access Controls: Prioritize the security of sensitive data by implementing encryption mechanisms and access controls. Ensure compliance with data protection regulations to safeguard participant privacy.

Invest in Data Skills and Training:

Continuous Training: Stay abreast of the latest data management tools and techniques through

continuous training. Enhance data literacy skills within research teams to foster a culture of effective data management.

Engage in Interdisciplinary Collaboration:

Collaborate Across Disciplines: Actively seek interdisciplinary collaborations to broaden the scope of research. Collaborating with experts from diverse fields can enrich datasets and contribute to a more holistic understanding of economic phenomena.

Leverage Integrated Platforms:

Utilize Integrated Data Platforms: Explore and leverage integrated data platforms such as those offered by research institutions or organizations like the UK Data Service. These platforms streamline data access and foster collaboration across disciplines.

Recommendations for Institutions and Policymakers:

8.2 Establish Data Management Policies:

Develop Institutional Data Management Policies: Institute clear policies on data management within academic institutions. These policies should address data sharing, accessibility, and ethical considerations to ensure consistency across research projects.

8.3 Invest in Technological Infrastructure:

Upgrade Technological Infrastructure: Allocate resources to upgrade technological infrastructure to support integrated data management. This includes investing in secure data storage, high-performance computing, and interoperable systems.

8.4 Promote Open Science Initiatives:

Encourage Open Science Practices: Support and incentivize open science initiatives that promote transparency, data sharing, and reproducibility. Provide researchers with the resources and platforms necessary to share their datasets openly.

8.5 Facilitate Interdisciplinary Collaboration:

Create Collaborative Spaces: Establish interdisciplinary research centers or collaborative spaces that encourage researchers from various disciplines to work together. These spaces can facilitate the integration of diverse datasets and foster a culture of collaboration.

8.6 Provide Data Management Support Services:

Offer Training and Support Services: Institute training programs and support services to assist

researchers in adopting effective data management practices. This includes providing guidance on data storage, metadata creation, and compliance with ethical standards.

8.7 Advocate for Data-Driven Policies:

Advocate for Evidence-Based Policymaking:

Encourage policymakers to base their decisions on evidence derived from integrated data analyses. Highlight the economic impact of data-driven policies and advocate for the integration of economic research into policy development.

8.8 Facilitate Knowledge Exchange:

Organize Workshops and Seminars: Host workshops and seminars that facilitate knowledge exchange on integrated data management practices. Promote awareness and provide a platform for researchers to share their experiences and best practices.

By implementing these recommendations, researchers, institutions, and policymakers can collectively contribute to the advancement of integrated research data management in the field of economics. This, in turn, will lead to more efficient, transparent, and impactful economic research with broader societal implications.

9. Conclusion: Towards Effective Research Data Management Practices

This section summarizes the key points and emphasizes the importance of implementing effective research data management practices for robust research.

The exploration of the economics of integrated research data management reveals a landscape of transformative possibilities and challenges that intersect at the nexus of data, research, and economic understanding. The key findings and implications derived from this discussion underscore the profound impact that effective data management practices can have on the subject fields.

9.1 Key Findings:

Efficiency Gains: Integrated research data management contributes to increased efficiency in economic research processes by streamlining data access, automating tasks, and optimizing resource utilization. The result is a more agile and responsive research environment.

Reproducibility: Robust data management practices enhance the reproducibility of economic studies, reinforcing the credibility of research

findings. Standardized data formats, version controls, and comprehensive documentation ensure that research can be replicated and verified.

Collaboration and Interdisciplinary Research:

Integrated data management facilitates collaboration among researchers from different disciplines. This interdisciplinary approach fosters a more comprehensive understanding of economic phenomena, enriching research outcomes and promoting holistic solutions.

Monetary Benefits: The economic value of research data manifests in tangible monetary benefits, including cost savings, resource optimization, and increased research productivity. Integrated data management practices contribute to the efficient use of resources and overall budgetary optimization.

Innovation and Policy Implications: Enhanced data management supports innovation in economic research methodologies and informs evidence-based policymaking. The integration of economic and non-economic data enables researchers and policymakers to derive insights that contribute to the development of innovative models and effective policy interventions.

9.2 Implications:

Cultural Shift towards Data Literacy: The findings emphasize the need for a cultural shift towards data literacy among researchers, institutions, and policymakers. Continuous training and support are crucial to foster an environment where effective data management is considered a fundamental aspect of economic research.

Technological Investment: Institutions must prioritize investments in technological infrastructure to support integrated data management. Upgrading systems, providing secure data storage, and ensuring interoperability are critical steps in harnessing the full potential of integrated research data management.

Ethical Considerations: The integration of diverse datasets necessitates a heightened focus on ethical considerations, particularly regarding data privacy and participant rights. Researchers and institutions must develop and adhere to robust ethical guidelines to maintain public trust and ensure responsible data use.

9.3 Overall Significance:

The significance of this research lies in its contribution to the evolution of economics research

practices in the era of big data. Integrated research data management is not merely a technical advancement; it represents a paradigm shift that empowers researchers to navigate the complexities of contemporary economic challenges with greater precision and depth. The economic benefits, coupled with the potential for innovation and informed policymaking, underscore the transformative potential of embracing integrated data management practices.

In conclusion, integrated research data management is a rapidly evolving field with the potential to significantly improve the quality, efficiency, and overall impact of research across all disciplines. By following the recommendations outlined for researchers, institutions, and policymakers, stakeholders can work together to create a future where data transcends its role as a resource and becomes a driving force that shapes our understanding of the world.

11. References

- 1 Adaga E M, Okorie G N, Egieya Z E, Ikwue U, Udeh C A, DaraOjimba D O and Oriekhoe O I, The role of big data in business strategy: a critical review, *Computer Science & IT Research Journal*, 4(3) (2024) 327-350. <https://doi.org/10.51594/csitrj.v4i3.686>
- 2 Eboigbe E O, Farayola O A, Olatoye F O, Nnabugwu N C and Daraojimba C, Business intelligence transformation through AI and data analytics. *Engineering Science & Technology Journal*, 4(5) (2023) 285-307. <https://doi.org/10.51594/estj.v4i5.616>
- 3 Alloui H and Mourdi Y, Exploring the full potentials of IoT for better financial growth and stability: a comprehensive survey. *Sensors*, 23(19) (2023) 8015. <https://doi.org/10.3390/s23198015>
- 4 Höchtel J, Parycek P and Schöllhammer R, Big data in the policy cycle: policy decision making in the digital era. *Journal of Organizational Computing and Electronic Commerce*, 26(1-2) (2016) 147-169. <https://doi.org/10.1080/10919392.2015.1125187>
- 5 Omol E J, Organizational digital transformation: from evolution to future trends, *Digital Transformation and Society*, Vol. ahead-of-print No. ahead-of-print (2023). <https://doi.org/10.1108/DTS-08-2023-0061>
- 6 Balla E, How data science is reshaping diverse industries, (January 8, 2024). Available at <https://www.datasciencecentral.com/how-data-science-is-reshaping-diverse-industries/> (Accessed on 22 April 2024).
- 7 Wei X, Data-driven revolution: advancing scientific and technological innovation in Chinese a-share listed companies. *J Knowledge Economy*, (2023). <https://doi.org/10.1007/s13132-023-01476-6>
- 8 Chatterjee S, Chaudhuri R and Vomits, Does data-driven culture impact innovation and performance of a firm? an empirical examination. *Annals of Operations Research*, 333 (2024) 601-626. <https://doi.org/10.1007/s10479-020-03887-z>
- 9 George B M, Monetizing Research in the 21st Century: The Commercialization of Industrial and Social Sciences, 2023. 10.13140/RG.2.2.36809.52328
- 10 Baecker J, Engert M, Pfaff M and Krcmar H, Business strategies for data monetization: deriving insights from practice. Online: https://doi.org/10.30844/wi_2020_j3-baecker
- 11 Moro Visconti R, Larocca A and Marconi M, Big Data-Driven value chains and digital platforms: from value co-creation to monetization. (January 18, 2017). Available at SSRN: <https://ssrn.com/abstract=2903799> or <http://dx.doi.org/10.2139/ssrn.2903799>
- 12 Lin S, Wang M, Jing C. *et al.* The influence of AI on the economic growth of different regions in China. *Scientific Reports*, 14 9169 (2024). <https://doi.org/10.1038/s41598-024-59968-7>
- 13 Bachmann N, Tripathi S, Brunner M and Jodlbauer H, The contribution of data-driven technologies in achieving the sustainable development goals. *Sustainability*, 14(5) (2022) 2497. <https://doi.org/10.3390/su14052497>
- 14 Wei X, Data-driven revolution: advancing scientific and technological innovation in Chinese a-share listed companies. *J Knowledge Economy*, (2023). <https://doi.org/10.1007/s13132-023-01476-6>
- 15 Paredes R, Drive business growth with data-driven decision-making, *SafetyCulture*, (9 April, 2024). <https://safetyculture.com/topics/data-driven-decision-making/>
- 16 Stobierski, T, The advantages of data-driven decision-making, *HBS Online -Business Insights*, (26 August, 2019). <https://online.hbs.edu/blog/post/data-driven-decision-making#>
- 17 Gray J. Data management: past, present, and future. *Microsoft Research June 1996 Technical Report MSR-TR-96-18*, (This paper appeared in *IEEE Computer* 29(10) 38-46 (1996)). Available at: <https://arxiv.org/pdf/cs/0701156> (Accessed on 10 April 2024).
- 18 Foote K D, A brief history of data management, (February 19, 2022) Available at <https://www.dataversity.net/brief-history-data-management/> (Accessed on 23 April 2024).
- 19 Subaveerapandiyana A, Research data management practices and challenges in academic libraries: a comprehensive review, *Library Philosophy and Practice (e-journal)* (2023) 7866. <https://digitalcommons.unl.edu/libphilprac/7866>
- 20 International Telecommunication Union 2021. Emerging technologies, including cloud computing, m-services and OTTs: challenges and opportunities, economic and policy impact for developing countries: Output Report on ITU D Question 3/1 for the study period 2018-2021. Available at https://www.itu.int/dms_pub/itu-d/opb/stg/D-STG-SG01.03.2-2021-PDF-E.pdf (Accessed on 19 April 2024)
- 21 Marozzo F and Talia D, Perspectives on big data, cloud-based data analysis and machine learning systems, *Big Data and Cognitive Computing*, 7(2) (2023) 104. <https://doi.org/10.3390/bdcc7020104>
- 22 Varriale V, Cammarano A, Michelino F, *et al.*, Critical analysis of the impact of artificial intelligence integration with cutting-edge technologies for production systems. *Journal of Intelligent Manufacturing*, (2023). <https://doi.org/10.1007/s10845-023-02244-8>

- 23 Zhang L, Wang S and Liu B. Deep learning for sentiment analysis: a survey. *WIREs Data Mining Knowledge Discovery*, 8 e1253 (2018). <https://doi.org/10.1002/widm.1253>
- 24 Christensen G and Miguel E, transparency, reproducibility, and the credibility of economics research, (2017). <https://osf.io/preprints/metaarxiv/9a3rw/download>
- 25 Grant S, Wendt K E, Leadbeater B J, *et al.*, Transparent, open, and reproducible prevention science. *Prevention Science*, 23 (2022) 701–722. <https://doi.org/10.1007/s11121-022-01336-w>
- 26 Hardwicke T E, Wallach J D, Kidwell M C, Bendixen T, Crüwell S and Ioannidis J P A, An empirical assessment of transparency and reproducibility-related research practices in the social sciences (2014–2017). *Royal Society Open Science*, 7(2) (2020) 190806. <https://doi.org/10.1098/rsos.190806>
- 27 Stockemer D, Koehler S and Lentz T, Data access, transparency, and replication: new insights from the political behaviour literature. *PS: Political Science and Politics*, 51 (2018) 799–803. <https://doi.org/10.1017/S1049096518000926>
- 28 Arrison T and Sloan S S (Eds.), *Examining core elements of international research collaboration: summary of a workshop*, (National Academies Press, Washington D C), 2011. Available at https://books.google.co.in/books?hl=en&lr=&id=r9nu5R4EQsMC&oi=fnd&pg=PR1&dq=effectiveness+of+institutional+policies+and+international+collaborations+in+ensuring+data+integrity,+security,+and+ethical+use+in+research.&ots=HQ-OSUCbE0&sig=jvmE_yZd5QQaDnimjnH46GikMgk (Accessed on April 27 2024).
- 29 Chawinga W D and Zinn S, Global perspectives of research data sharing: a systematic literature review. *Library and Information Science Research*, 41(2) (2019) 109–122. <https://www.sciencedirect.com/science/article/pii/S074081881830330X>
- 30 Clark K, Duckham M, Guillemin M, *et al.*, Advancing the ethical use of digital data in human research: challenges and strategies to promote ethical practice. *Ethics and Information Technology*, 21 (2019) 59–73. <https://doi.org/10.1007/s10676-018-9490-4>
- 31 Kalkman S, Mostert M, Gerlinger C, van Delden, J J and van Thiel G J, Responsible data sharing in international health research: a systematic review of principles and norms. *BMC Medical Ethics*, 20 (2019) 1–13. <https://link.springer.com/article/10.1186/s12910-019-0359-9>
- 32 Kretser A, Murphy D, Bertuzzi S, *et al.*, Scientific integrity principles and best practices: recommendations from a scientific integrity consortium. *Science and Engineering Ethics*, 25 (2019) 327–355. <https://doi.org/10.1007/s11948-019-00094-3>